

# ABflo® 647 Rabbit anti-FITC/5-FAM/6-FAM mAb

Catalog No.: A24239

## Basic Information

### Observed MW

### Calculated MW

### Category

Primary antibody

### Applications

FC

### Cross-Reactivity

Species independent

### CloneNo number

ARC51071-ABf647

### Conjugate

ABflo® 647. Ex:648nm. Em:664nm.

## Background

FITC (fluorescein isothiocyanate) is a fluorochrome dye that absorbs ultraviolet or blue light causing molecules to become excited and emit a visible yellow-green light. This emission ceases upon removal of the light causing the excitation. Fluorochrome labeling provides rapid, accurate localization of antigen-antibody interaction when one of the reactants is part of a cell, tissue or other biological structure. FITC is a commonly used marker for antibodies in immunofluorescent techniques since the conjugation of FITC to proteins is relatively easy and does not, in general, destroy the biological activity of the labeled protein. FITC is widely used as a hapten to label different proteins.

## Recommended Dilutions

FC 5 µl per 10<sup>6</sup> cells in  
100 µl volume

## Immunogen Information

### Gene ID

### Swiss Prot

### Immunogen

Chemical/ Small Molecule corresponding to FITC/5-FAM/6-FAM.

### Synonyms

FITC

## Contact

☎ | 400-999-6126

✉ | [cn.market@abclonal.com.cn](mailto:cn.market@abclonal.com.cn)

🌐 | [www.abclonal.com.cn](http://www.abclonal.com.cn)

## Product Information

### Source

Rabbit

### Isotype

IgG

### Purification

Affinity purification

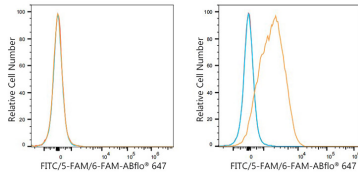
### Storage

Store at 2-8°C. Avoid freeze.

Buffer: PBS with 0.03% proclin300,0.2% BSA,pH7.3.

## Validation Data

---



Flow cytometry:  $1 \times 10^6$  HT-29 cells (negative control, left) and Raji cells (right) were surface-stained with Mouse anti-Human CD86 mAb (Biolegend 374203, 5  $\mu$ l/Test, orange line) or ABflo® 647 Rabbit IgG isotype control (A22070, 5  $\mu$ l/Test, blue line), then stained with ABflo® 647 Rabbit anti-FITC/5-FAM/6-FAM mAb (A24239, 5  $\mu$ l/Test). Non-fluorescently stained cells were used as blank control (red line).