

ABflo® 488 Rabbit anti-Mouse CD102 mAb

Catalog No.: A24241

Basic Information

Observed MW

Calculated MW

31kDa

Category

Primary antibody

Applications

FC

Cross-Reactivity

Mouse

CloneNo number

ARC62351-ABflo488

Conjugate

ABflo® 488. Ex:491nm. Em:516nm.

Recommended Dilutions

FC 5 µl per 10⁶ cells in
100 µl volume

Background

Predicted to enable integrin binding activity. Predicted to be involved in cell adhesion. Located in microvillus; plasma membrane; and uropod. Is integral component of plasma membrane. Is expressed in central nervous system; extraembryonic component; female reproductive system; retina; and vascular element. Orthologous to human ICAM2 (intercellular adhesion molecule 2).

Immunogen Information

Gene ID

15896

Swiss Prot

P35330

Immunogen

Recombinant fusion protein containing a sequence corresponding to amino acids 20-222 of mouse CD102 (NP_034624.1).

Synonyms

CD102; Ly-60; Icam-2

Contact

☎ | 400-999-6126

✉ | cn.market@abclonal.com.cn

🌐 | www.abclonal.com.cn

Product Information

Source

Rabbit

Isotype

IgG

Purification

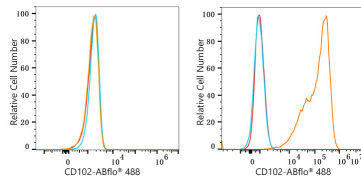
Affinity purification

Storage

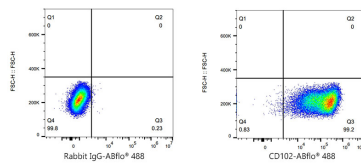
Store at 2-8°C. Avoid freeze.

Buffer: PBS with 0.03% proclin300,0.2% BSA,pH7.3.

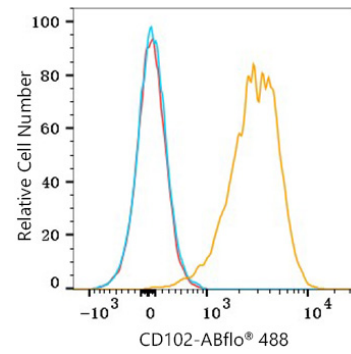
Validation Data



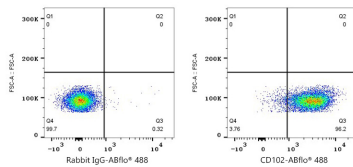
Flow cytometry: 1×10^6 C2C12 cells (low expression, left) and bEnd.3 cells (right) were surface-stained with ABflo® 488 Rabbit anti-Mouse CD102 mAb (A24241, 5 μ l/Test, orange line) or ABflo® 488 Rabbit IgG isotype control (A22069, 5 μ l/Test, blue line). Non-fluorescently stained cells were used as blank control (red line).



Flow cytometry: 1×10^6 bEnd.3 cells were surface-stained with ABflo® 488 Rabbit IgG isotype control (A22069, 5 μ l/Test, left) or ABflo® 488 Rabbit anti-Mouse CD102 mAb (A24241, 5 μ l/Test, right).



Flow cytometry: 1×10^6 C57BL/6 Splenocytes were surface-stained with ABflo® 488 Rabbit anti-Mouse CD102 mAb (A24241, 5 μ l/Test, orange line) or ABflo® 488 Rabbit IgG isotype control (A22069, 5 μ l/Test, blue line). Non-fluorescently stained cells were used as blank control (red line).



Flow cytometry: 1×10^6 C57BL/6 Splenocytes were surface-stained with ABflo® 488 Rabbit IgG isotype control (A22069, 5 μ l/Test, left) or ABflo® 488 Rabbit anti-Mouse CD102 mAb (A24241, 5 μ l/Test, right).