

ABflo® 488 Rabbit anti-Human Integrin β 5/ITGB5 mAb

Catalog No.: A24246

Basic Information

Observed MW

Refer to figures

Calculated MW

88kDa

Category

Primary antibody

Applications

FC

Cross-Reactivity

Human

CloneNo number

ARC60858-ABflo488

Conjugate

ABflo® 488. Ex:491nm. Em:516nm.

Recommended Dilutions

FC 5 μ l per 10^6 cells in
100 μ l volume

Background

Integrins, heterodimeric trans-membrane matrix receptors, are mainly involved in the signal transduction and attachments to extra cellular matrix (ECM).^{††} In ECM they act as a mediator of cell adhesion.[†] In human, at least 18 α and eight β subunits have been found.[†] ITGB5 (integrin subunit β 5) helps in facilitation of cancer cell migration, anchorage-independent growth and tumor angiogenesis. Integrin is activated by G-protein-coupled receptors, resulting in the phosphorylation of cytoplasmic domain of the β subunit. The coupled α and β cytoplasmic tails are responsible for maintaining integrin in inactive state.

Immunogen Information

Gene ID

3693

Swiss Prot

P18084

Immunogen

Recombinant Protein corresponding to a sequence within amino acids 24-490 of human Integrin β 5/ITGB5 (NP_002204.2).

Synonyms

ITGB5; integrin beta-5

Contact

 | 400-999-6126

 | cn.market@abclonal.com.cn

 | www.abclonal.com.cn

Product Information

Source

Rabbit

Isotype

IgG

Purification

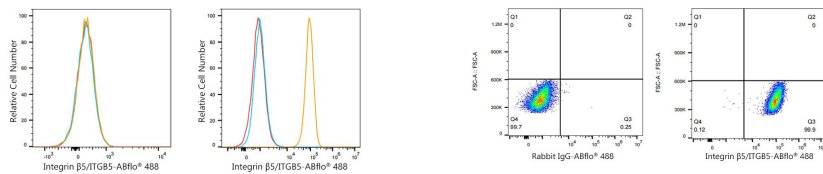
Affinity purification

Storage

Store at 2-8°C. Avoid freeze.

Buffer: PBS with 0.03% proclin300,0.2% BSA,pH7.3.

Validation Data



Flow cytometry: 1×10^6 Jurkat cells (negative control, left) and A549 cells (right) were surface-stained with ABflo[®] 488 Rabbit anti-Human Integrin $\beta 5$ /ITGB5 mAb (A24246, 5 μ l/Test, orange line) or ABflo[®] 488 Rabbit IgG isotype control (A22069, 5 μ l/Test, blue line). Non-fluorescently stained were used as blank control (red line).

Flow cytometry: 1×10^6 A549 cells were surface-stained with ABflo[®] 488 Rabbit IgG isotype control (A22069, 5 μ l/Test, left) or ABflo[®] 488 Rabbit anti-Human Integrin $\beta 5$ /ITGB5 mAb (A24246, 5 μ l/Test, right).