

# ABflo® 647 Rabbit anti-Human Integrin $\beta$ 5/ITGB5 mAb

Catalog No.: A24247

## Basic Information

### Observed MW

Refer to figures

### Calculated MW

88kDa

### Category

Primary antibody

### Applications

FC

### Cross-Reactivity

Human

### CloneNo number

ARC60858-ABflo647

### Conjugate

ABflo® 647. Ex:648nm. Em:664nm.

## Recommended Dilutions

FC 5  $\mu$ l per  $10^6$  cells in  
100  $\mu$ l volume

## Background

Integrins, heterodimeric trans-membrane matrix receptors, are mainly involved in the signal transduction and attachments to extra cellular matrix (ECM).<sup>††</sup> In ECM they act as a mediator of cell adhesion.<sup>†</sup> In human, at least 18  $\alpha$  and eight  $\beta$  subunits have been found.<sup>†</sup> ITGB5 (integrin subunit  $\beta$  5) helps in facilitation of cancer cell migration, anchorage-independent growth and tumor angiogenesis. Integrin is activated by G-protein-coupled receptors, resulting in the phosphorylation of cytoplasmic domain of the  $\beta$  subunit. The coupled  $\alpha$  and  $\beta$  cytoplasmic tails are responsible for maintaining integrin in inactive state.

## Immunogen Information

### Gene ID

3693

### Swiss Prot

P18084

### Immunogen

Recombinant Protein corresponding to a sequence within amino acids 24-490 of human Integrin  $\beta$ 5/ITGB5 (NP\_002204.2).


### Synonyms

ITGB5; integrin beta-5

## Contact

 | 400-999-6126

 | [cn.market@abclonal.com.cn](mailto:cn.market@abclonal.com.cn)

 | [www.abclonal.com.cn](http://www.abclonal.com.cn)

## Product Information

### Source

Rabbit

### Isotype

IgG

### Purification

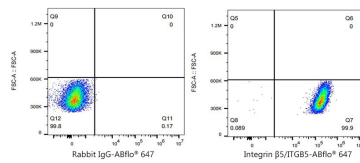
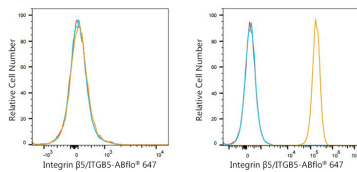
Affinity purification

### Storage

Store at 2-8°C. Avoid freeze.

Buffer: PBS with 0.03% proclin300,0.2% BSA,pH7.3.

## Validation Data



Flow cytometry:  $1 \times 10^6$  Jurkat cells (negative control, left) and A549 cells (right) were surface-stained with ABflo® 647 Rabbit anti-Human Integrin  $\beta 5$ /ITGB5 mAb (A24247, 5  $\mu$ l/Test, orange line) or ABflo® 647 Rabbit IgG isotype control (A22070, 5  $\mu$ l/Test, blue line). Non-fluorescently stained were used as blank control (red line).

Flow cytometry:  $1 \times 10^6$  A549 cells were surface-stained with ABflo® 647 Rabbit IgG isotype control (A22070, 5  $\mu$ l/Test, left) or ABflo® 647 Rabbit anti-Human Integrin  $\beta 5$ /ITGB5 mAb (A24247, 5  $\mu$ l/Test, right).