

# PE Rabbit anti-Human CD62L/L-Selectin mAb

Catalog No.: A24249

## Basic Information

### Observed MW

Refer to figures

### Calculated MW

42kDa/43kDa

### Category

Primary antibody

### Applications

FC

### Cross-Reactivity

Human

### CloneNo number

ARC60035-PE

### Conjugate

PE. Ex:565nm. Em:574nm.

## Recommended Dilutions

**FC** 5  $\mu$ l per  $10^6$  cells in  
100  $\mu$ l volume

## Background

This gene encodes a cell surface adhesion molecule that belongs to a family of adhesion/homing receptors. The encoded protein contains a C-type lectin-like domain, a calcium-binding epidermal growth factor-like domain, and two short complement-like repeats. The gene product is required for binding and subsequent rolling of leucocytes on endothelial cells, facilitating their migration into secondary lymphoid organs and inflammation sites. Single-nucleotide polymorphisms in this gene have been associated with various diseases including immunoglobulin A nephropathy. Alternatively spliced transcript variants have been found for this gene.

## Immunogen Information

### Gene ID

6402

### Swiss Prot

P14151

### Immunogen

Recombinant fusion protein containing a sequence corresponding to amino acids 39-332 of human CD62L/L-Selectin (NP\_000646.3).

### Synonyms

SELL; CD62L; LAM1; LECAM1; LEU8; LNHR; LSEL; LYAM1; PLNHR; TQ1; L-selectin

## Contact

☎ | 400-999-6126

✉ | [cn.market@abclonal.com.cn](mailto:cn.market@abclonal.com.cn)

🌐 | [www.abclonal.com.cn](http://www.abclonal.com.cn)

## Product Information

### Source

Rabbit

### Isotype

IgG

### Purification

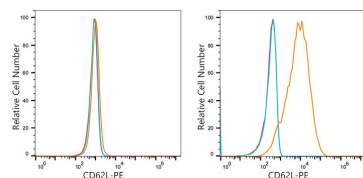
Affinity purification

### Storage

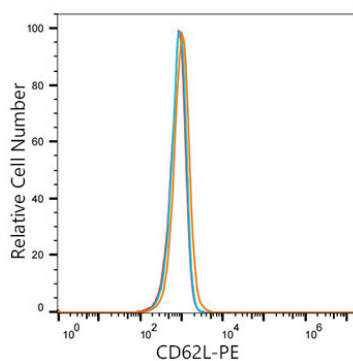
Store at 2-8°C. Avoid freeze.

Buffer: PBS with 0.03% proclin300,0.2% BSA,pH7.3.

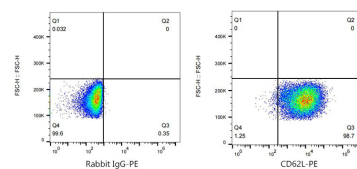
## Validation Data



Flow cytometry:  $1 \times 10^6$  T-47D cells(negative control,left) and MOLT-4 cells(right) were surface-stained with PE Rabbit anti-Human CD62L/L-Selectin mAb(A24249, 5 µl/Test,orange line) or PE Rabbit IgG isotype control (5 µl/Test,blue line).Non-fluorescently stained cells were used as blank control (red line).



Flow cytometry:  $1 \times 10^6$  T-47D cells(negative control) were surface-stained with PE Rabbit anti-Human CD62L/L-Selectin mAb(A24249, 5 µl/Test,orange line) or PE Rabbit IgG isotype control (5 µl/Test,blue line).Non-fluorescently stained T-47D cells were used as blank control (red line).



Flow cytometry: $1 \times 10^6$  MOLT-4 cells were surface-stained with PE Rabbit IgG isotype control (5 µl/Test,left) or PE Rabbit anti-Human CD62L/L-Selectin mAb(A24249, 5 µl/Test,right).