

WWP2 Rabbit pAb

Catalog No.: A2425 **1 Publications**

Basic Information

Observed MW

105kDa

Calculated MW

99kDa

Category

Primary antibody

Applications

ELISA, WB

Cross-Reactivity

Human

Background

This gene encodes a member of the Nedd4 family of E3 ligases, which play an important role in protein ubiquitination. The encoded protein contains four WW domains and may play a role in multiple processes including chondrogenesis and the regulation of oncogenic signaling pathways via interactions with Smad proteins and the tumor suppressor PTEN. Alternatively spliced transcript variants encoding multiple isoforms have been observed for this gene, and a pseudogene of this gene is located on the long arm of chromosome 10.

Recommended Dilutions

WB 1:500 - 1:2000

Immunogen Information

Gene ID

11060

Swiss Prot

O00308

Immunogen

Recombinant fusion protein containing a sequence corresponding to amino acids 151-400 of human WWP2 (NP_001257383.1).

Synonyms

AIP2; WWp2-like; WWP2

Contact

 | 400-999-6126

 | cn.market@abclonal.com.cn

 | www.abclonal.com.cn

Product Information

Source

Rabbit

Isotype

IgG

Purification

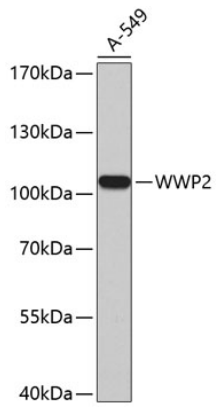
Affinity purification

Storage

Store at -20°C. Avoid freeze / thaw cycles.

Buffer: PBS with 0.01% thimerosal, 50% glycerol, pH7.3.

Validation Data



Western blot analysis of lysates from A-549 cells, using WWP2 Rabbit pAb (A2425).