

# PE Rabbit anti-Human CD85j/ILT2 mAb

Catalog No.: A24250

## Basic Information

### Observed MW

### Calculated MW

49kDa/70kDa/71kDa

### Category

Primary antibody

### Applications

FC

### Cross-Reactivity

Human

### CloneNo number

ARC60700-PE

### Conjugate

PE. Ex:565nm. Em:574nm.

## Background

This gene is a member of the leukocyte immunoglobulin-like receptor (LIR) family, which is found in a gene cluster at chromosomal region 19q13.4. The encoded protein belongs to the subfamily B class of LIR receptors which contain two or four extracellular immunoglobulin domains, a transmembrane domain, and two to four cytoplasmic immunoreceptor tyrosine-based inhibitory motifs (ITIMs). The receptor is expressed on immune cells where it binds to MHC class I molecules on antigen-presenting cells and transduces a negative signal that inhibits stimulation of an immune response. It is thought to control inflammatory responses and cytotoxicity to help focus the immune response and limit autoreactivity. Multiple transcript variants encoding different isoforms have been found for this gene.

## Recommended Dilutions

FC 5  $\mu$ l per  $10^6$  cells in  
100  $\mu$ l volume

## Immunogen Information

### Gene ID

10859

### Swiss Prot

Q8NHL6

### Immunogen

Recombinant fusion protein containing a sequence corresponding to amino acids 24-458 of human CD85j/ILT2 (NP\_006660.4).

### Synonyms

LILRB1; CD85j; ILT-2; ILT2; LIR-1; LIR1; MIR-7; MIR7; PIR-B; PIRB; leukocyte immunoglobulin like receptor B1

## Contact

☎ | 400-999-6126

✉ | [cn.market@abclonal.com.cn](mailto:cn.market@abclonal.com.cn)

🌐 | [www.abclonal.com.cn](http://www.abclonal.com.cn)

## Product Information

### Source

Rabbit

### Isotype

IgG

### Purification

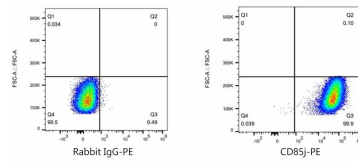
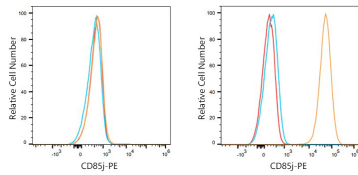
Affinity purification

### Storage

Store at 2-8°C. Avoid freeze.

Buffer: PBS with 0.03% proclin300,0.2% BSA,pH7.3.

## Validation Data



Flow cytometry:  $1 \times 10^6$  K-562 cells (negative control, left) and Daudi cells (right) were surface-stained with PE Rabbit anti-Human CD85j/ILT2 mAb (A24250, 5  $\mu$ l/Test, orange line) or PE Rabbit IgG isotype control (5  $\mu$ l/Test, blue line). Non-fluorescently stained cells were used as blank control (red line).

Flow cytometry:  $1 \times 10^6$  Daudi cells were surface-stained with PE Rabbit IgG isotype control (5  $\mu$ l/Test, left) or PE Rabbit anti-Human CD85j/ILT2 mAb (A24250, 5  $\mu$ l/Test, right).