

PE Rabbit anti-Human CD79b/Igβ mAb

Catalog No.: A24251

Basic Information

Observed MW

Calculated MW

14kDa/26kDa

Category

Primary antibody

Applications

FC

Cross-Reactivity

Human

CloneNo number

ARC61823-PE

Conjugate

PE. Ex:565nm. Em:574nm.

Background

The B lymphocyte antigen receptor is a multimeric complex that includes the antigen-specific component, surface immunoglobulin (Ig). Surface Ig non-covalently associates with two other proteins, Ig-alpha and Ig-beta, which are necessary for expression and function of the B-cell antigen receptor. This gene encodes the Ig-beta protein of the B-cell antigen component. Alternatively spliced transcript variants encoding different isoforms have been described.

Recommended Dilutions

FC 5 μl per 10⁶ cells in
100 μl volume

Immunogen Information

Gene ID

974

Swiss Prot

P40259

Immunogen

Recombinant fusion protein containing a sequence corresponding to amino acids 29-159 of human CD79b/Igβ (NP_000617.1).

Synonyms

CD79B; AGM6; B29; IGB; CD79b molecule

Contact

☎ | 400-999-6126

✉ | cn.market@abclonal.com.cn

🌐 | www.abclonal.com.cn

Product Information

Source

Rabbit

Isotype

IgG

Purification

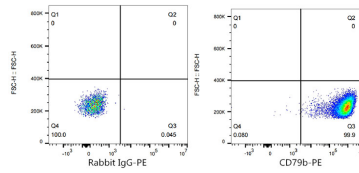
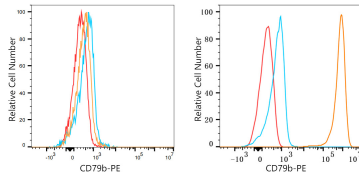
Affinity purification

Storage

Store at 2-8°C. Avoid freeze.

Buffer: PBS with 0.03% proclin300,0.2% BSA,pH7.3.

Validation Data



Flow cytometry: 1×10^6 HAP1 cells (negative control, left) and Daudi cells (right) were surface-stained with PE Rabbit anti-Human CD79b/Ig β mAb (A24251, 5 μ l/Test, orange line) or PE Rabbit IgG isotype control (5 μ l/Test, blue line). Non-fluorescently stained cells were used as blank control (red line).

Flow cytometry: 1×10^6 Daudi cells were surface-stained with PE Rabbit IgG isotype control (5 μ l/Test, left) or PE Rabbit anti-Human CD79b/Ig β mAb (A24251, 5 μ l/Test, right).