

# CD62L/L-Selectin Rabbit mAb

Catalog No.: A24253 **Recombinant**

## Basic Information

### Observed MW

Refer to figures

### Calculated MW

42kDa/43kDa

### Category

Primary antibody

### Applications

ELISA,FC

### Cross-Reactivity

Human

### CloneNo number

ARC60035

## Background

This gene encodes a cell surface adhesion molecule that belongs to a family of adhesion/homing receptors. The encoded protein contains a C-type lectin-like domain, a calcium-binding epidermal growth factor-like domain, and two short complement-like repeats. The gene product is required for binding and subsequent rolling of leucocytes on endothelial cells, facilitating their migration into secondary lymphoid organs and inflammation sites. Single-nucleotide polymorphisms in this gene have been associated with various diseases including immunoglobulin A nephropathy. Alternatively spliced transcript variants have been found for this gene.

## Recommended Dilutions

FC 1:500 - 1:1000

## Immunogen Information

### Gene ID

6402

### Swiss Prot

P14151

### Immunogen

Recombinant fusion protein containing a sequence corresponding to amino acids 39-332 of human CD62L (NP\_000646.3).

### Synonyms

SELL; CD62L; LAM1; LECAM1; LEU8; LNHR; LSEL; LYAM1; PLNHR; TQ1; L-selectin; CD62L/L-Selectin

## Contact

☎ | 400-999-6126

✉ | [cn.market@abclonal.com.cn](mailto:cn.market@abclonal.com.cn)

🌐 | [www.abclonal.com.cn](http://www.abclonal.com.cn)

## Product Information

### Source

Rabbit

### Isotype

IgG

### Purification

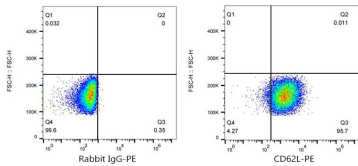
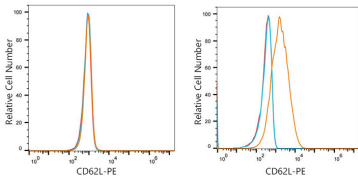
Affinity purification

### Storage

Store at -20°C. Avoid freeze / thaw cycles.

Buffer: PBS with 0.05% proclin300,0.05% BSA,50% glycerol,pH7.3

# Validation Data



Flow cytometry: 1X10<sup>6</sup> T-47D cells (negative control, left) and MOLT-4 cells (right) were surface-stained with CD62L Rabbit mAb(A24253, 2 µg/mL, orange line) or PE Rabbit IgG isotype control (2 µg/mL, blue line), followed by PE Donkey anti-rabbit Antibody (1:200 dilution) staining. Non-fluorescently stained cells were used as blank control (red line).

Flow cytometry: 1X10<sup>6</sup> MOLT-4 cells were surface-stained with PE Rabbit IgG isotype control (2 µg/mL, left) or CD62L Rabbit mAb(A24253, 2 µg/mL, right).