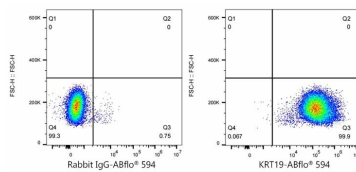
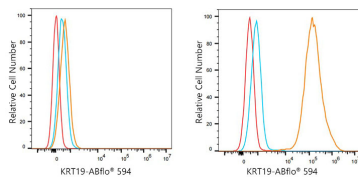


Validation Data



Flow cytometry: 1×10^6 Jurkat cells (negative control, left) and MCF7 cells (right) were intracellularly-stained with ABflo® 594 Rabbit anti-Human Cytokeratin 19 (KRT19) mAb (A24259, 5 μ l/Test, orange line) or ABflo® 594 Rabbit IgG isotype control (A23821, 5 μ l/Test, blue line). Non-fluorescently stained cells were used as blank control (red line).

Flow cytometry: 1×10^6 MCF7 were intracellularly-stained with ABflo® 594 Rabbit IgG isotype control (A23821, 5 μ l/Test, left) or ABflo® 594 Rabbit anti-Human Cytokeratin 19 (KRT19) mAb (A24259, 5 μ l/Test, right).