

IL12B Rabbit mAb

Catalog No.: A24262 **Recombinant**

Basic Information

Observed MW

45-51kDa (Full-Length)

Calculated MW

38kDa

Category

Primary antibody

Applications

WB,IHC-P,FC (intra),ELISA

Cross-Reactivity

Human, Mouse

CloneNo number

ARC63198

Background

This gene encodes the beta subunit p40 of the Interleukin 12 (IL-12) family of cytokines. Members of the IL-12 family form heterodimers consisting of heavy and light subunits linked by disulfide bonds. The product of this gene, p40, is a subunit of interleukins IL-12 and IL-23.

Recommended Dilutions

WB 1:2000 - 1:8000

IHC-P 1:200 - 1:800

FC 1:100 - 1:500

ELISA Recommended starting concentration is 1 µg/mL. Please optimize the concentration based on your specific assay requirements.

Immunogen Information

Gene ID

16160

Swiss Prot

P43432

Immunogen

Recombinant protein (or fragment). This information is considered to be commercially sensitive.

Synonyms

p40; Il-12b; Il12p40; Il-12p40; IL12B

Contact

☎ | 400-999-6126

✉ | cn.market@abclonal.com.cn

🌐 | www.abclonal.com.cn

Product Information

Source

Rabbit

Isotype

IgG

Purification

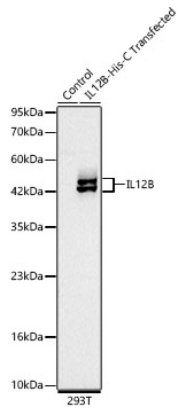
Affinity purification

Storage

Store at -20°C. Avoid freeze / thaw cycles.

Buffer: PBS containing 50% glycerol and 0.05% BSA, preserved with proclin300 or sodium azide (as specified on the Certificate of Analysis), pH 7.3.

Validation Data



Western blot analysis of lysates from 293T cells transfected with IL12B using IL12B Rabbit mAb (A24262) at 1:2000 dilution.

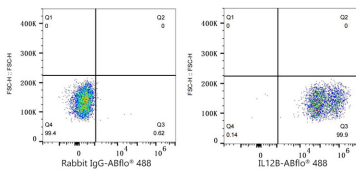
Secondary antibody: HRP-conjugated Goat anti-Rabbit IgG (H+L) (AS014) at 1:10000 dilution.

Lysates/proteins: 25 µg per lane.

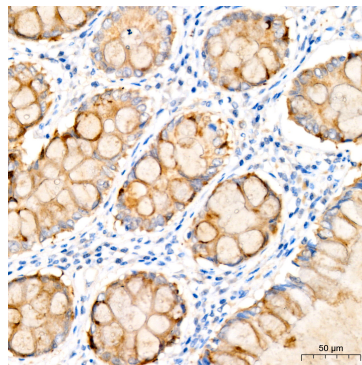
Blocking buffer: 3% nonfat dry milk in TBST.

Detection: ECL Basic Kit (RM00020).

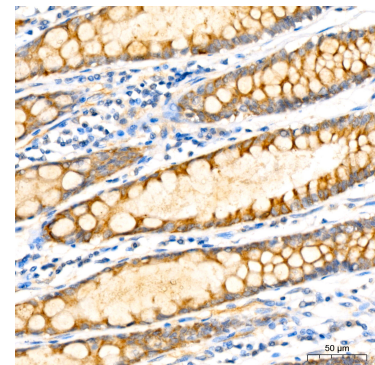
Exposure time: 30 s.



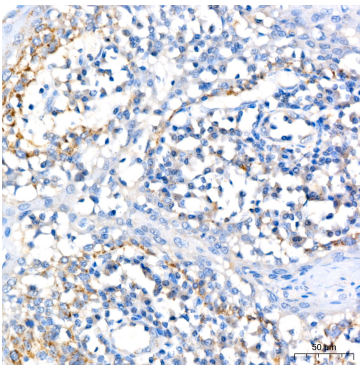
Flow cytometry: 1×10^6 293T (Transfection) cells were intracellularly-stained with ABflo® 488 Rabbit IgG isotype control (A22069, 2 µg/mL, left) or IL12B Rabbit mAb (A24262, 2 µg/mL, right).



Immunohistochemistry analysis of paraffin-embedded Human colon carcinoma using IL12B Rabbit mAb (A24262) at dilution of 1:200 (40x lens). High pressure antigen retrieval performed with 0.01M Citrate buffer (pH 6.0) prior to IHC staining.



Immunohistochemistry analysis of paraffin-embedded Human colon using IL12B Rabbit mAb (A24262) at dilution of 1:200 (40x lens). High pressure antigen retrieval performed with 0.01M Citrate buffer (pH 6.0) prior to IHC staining.



Immunohistochemistry analysis of paraffin-embedded Human tonsil using IL12B Rabbit mAb (A24262) at dilution of 1:200 (40x lens). High pressure antigen retrieval performed with 0.01M Citrate buffer (pH 6.0) prior to IHC staining.