

# ABflo® 594 Rabbit anti-Human EGFR mAb

Catalog No.: A24267

## Basic Information

### Observed MW

### Calculated MW

44kDa/69kDa/77kDa/134kDa

### Category

Primary antibody

### Applications

IF/ICC,FC

### Cross-Reactivity

Human

### CloneNo number

ARC61443

### Conjugate

ABflo® 594. Ex:588nm. Em:604nm.

## Background

The protein encoded by this gene is a transmembrane glycoprotein that is a member of the protein kinase superfamily. This protein is a receptor for members of the epidermal growth factor family. EGFR is a cell surface protein that binds to epidermal growth factor. Binding of the protein to a ligand induces receptor dimerization and tyrosine autophosphorylation and leads to cell proliferation. Mutations in this gene are associated with lung cancer.

## Recommended Dilutions

IF/ICC 1:50 - 1:200

FC 5 µl per 10<sup>6</sup> cells in  
100 µl volume

## Immunogen Information

### Gene ID

1956

### Swiss Prot

P00533

### Immunogen

Recombinant protein (or fragment). This information is considered to be commercially sensitive.

### Synonyms

EGFR; ERBB; ERBB1; HER1; NISBD2; PIG61; mENA; epidermal growth factor receptor

## Contact

☎ | 400-999-6126

✉ | [cn.market@abclonal.com.cn](mailto:cn.market@abclonal.com.cn)

🌐 | [www.abclonal.com.cn](http://www.abclonal.com.cn)

## Product Information

### Source

Rabbit

### Isotype

IgG

### Purification

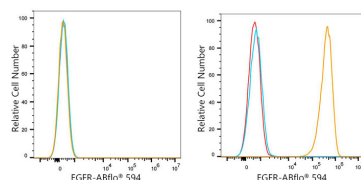
Affinity purification

### Storage

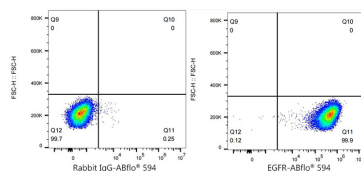
Store at 2-8°C. Avoid freeze.

Buffer: PBS containing 0.2% BSA, preserved with proclin300 or sodium azide (as specified on the Certificate of Analysis), pH 7.3.

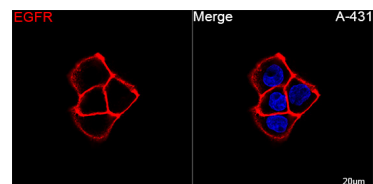
## Validation Data



Flow cytometry:  $1 \times 10^6$  Jurkat cells (negative control, left) and A-431 cells (right) were surface-stained with ABflo® 594 Rabbit anti-Human EGFR mAb (A24267, 5  $\mu$ l/Test, orange line) or ABflo® 594 Rabbit IgG isotype control (A23821, 5  $\mu$ l/Test, blue line). Non-fluorescently stained cells were used as blank control (red line).



Flow cytometry:  $1 \times 10^6$  A-431 cells were surface-stained with ABflo® 594 Rabbit IgG isotype control (A23821, 5  $\mu$ l/Test, left) or ABflo® 594 Rabbit anti-Human EGFR mAb (A24267, 5  $\mu$ l/Test, right).



Confocal imaging of A-431 cells using ABflo® 594 Rabbit anti-Human EGFR mAb (A24267, dilution 1:25). DAPI was used for nuclear staining (Blue). Objective: 100x.