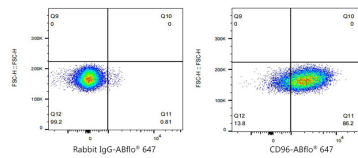
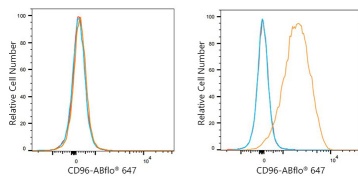




## Validation Data



Flow cytometry:  $1 \times 10^6$  HeLa cells (negative control, left) and MOLT-4 cells (right) were surface-stained with ABflo® 647 Rabbit anti-Human CD96/TACTILE mAb (A24278, 5  $\mu$ l/Test, orange line) or ABflo® 647 Rabbit IgG isotype control (A22070, 5  $\mu$ l/Test, blue line). Non-fluorescently stained cells were used as blank control (red line).

Flow cytometry:  $1 \times 10^6$  MOLT-4 cells were surface-stained with ABflo® 647 Rabbit IgG isotype control (A22070, 5  $\mu$ l/Test, left) or ABflo® 647 Rabbit anti-Human CD96/TACTILE mAb (A24278, 5  $\mu$ l/Test, right).