

ABflo® 594 Rabbit anti-Human CD96/TACTILE mAb

Catalog No.: A24279

Basic Information

Observed MW

Refer to figures

Calculated MW

65kDa

Category

Primary antibody

Applications

FC

Cross-Reactivity

Human

CloneNo number

ARC62525-ABflo594

Conjugate

ABflo® 594. Ex:588nm. Em:604nm.

Recommended Dilutions

FC 5 µl per 10⁶ cells in
100 µl volume

Background

The protein encoded by this gene belongs to the immunoglobulin superfamily. It is a type I membrane protein. The protein may play a role in the adhesive interactions of activated T and NK cells during the late phase of the immune response. It may also function in antigen presentation. Alternative splicing generates multiple transcript variants encoding distinct isoforms.

Immunogen Information

Gene ID

10225

Swiss Prot

P40200


Immunogen

Recombinant Protein corresponding to a sequence within amino acids 25-519 of human CD96/TACTILE (NP_937839.1).

Synonyms

TACTILE

Contact

 | 400-999-6126

 | cn.market@abclonal.com.cn

 | www.abclonal.com.cn

Product Information

Source

Rabbit

Isotype

IgG

Purification

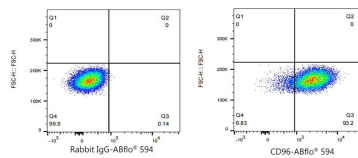
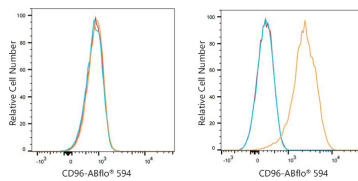
Affinity purification

Storage

Store at 2-8°C. Avoid freeze.

Buffer: PBS with 0.03% proclin300,0.2% BSA,pH7.3.

Validation Data



Flow cytometry: 1×10^6 HeLa cells (negative control, left) and MOLT-4 cells (right) were surface-stained with ABflo® 594 Rabbit anti-Human CD96/TACTILE mAb (A24279, 5 μ l/Test, orange line) or ABflo® 594 Rabbit IgG isotype control (A23821, 5 μ l/Test, blue line). Non-fluorescently stained cells were used as blank control (red line).

Flow cytometry: 1×10^6 MOLT-4 cells were surface-stained with ABflo® 594 Rabbit IgG isotype control (A23821, 5 μ l/Test, left) or ABflo® 594 Rabbit anti-Human CD96/TACTILE mAb (A24279, 5 μ l/Test, right).