

ABflo® 647 Rabbit anti-Human CD213a1/IL-13Rα1 mAb

Catalog No.: A24284

Basic Information

Observed MW

Calculated MW

31kDa/48kDa

Category

Primary antibody

Applications

FC

Cross-Reactivity

Human

CloneNo number

ARC62791-ABflo647

Conjugate

ABflo® 647. Ex:648nm. Em:664nm.

Recommended Dilutions

FC 5 µl per 10⁶ cells in
100 µl volume

Background

The protein encoded by this gene is a subunit of the interleukin 13 receptor. This subunit forms a receptor complex with IL4 receptor alpha, a subunit shared by IL13 and IL4 receptors. This subunit serves as a primary IL13-binding subunit of the IL13 receptor, and may also be a component of IL4 receptors. This protein has been shown to bind tyrosine kinase TYK2, and thus may mediate the signaling processes that lead to the activation of JAK1, STAT3 and STAT6 induced by IL13 and IL4.

Immunogen Information

Gene ID

3597

Swiss Prot

P78552

Immunogen

Recombinant fusion protein containing a sequence corresponding to amino acids 29-343 of human CD213a1/IL-13Rα1 (NP_001551.1).

Synonyms

IL13RA1; CD213A1; CT19; IL-13Ra; NR4; interleukin-13 receptor subunit alpha-1

Contact

 | 400-999-6126

 | cn.market@abclonal.com.cn

 | www.abclonal.com.cn

Product Information

Source

Rabbit

Isotype

IgG

Purification

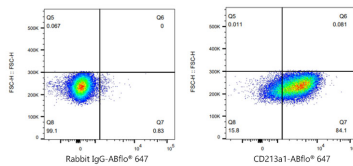
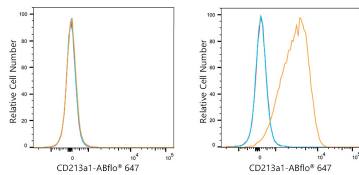
Affinity purification

Storage

Store at 2-8°C. Avoid freeze.

Buffer: PBS with 0.03% proclin300,0.2% BSA,pH7.3.

Validation Data



Flow cytometry: 1X10⁶ Jurkat cells (negative control, left) and MCF7 cells (right) were surface-stained with ABflo® 647 Rabbit anti-Human CD213a1/IL-13R α 1 mAb (A24284, 5 μ l/Test, orange line) or ABflo® 647 Rabbit IgG isotype control (A22070, 5 μ l/Test, blue line). Non-fluorescently stained cells were used as blank control (red line).

Flow cytometry: 1X10⁶ MCF7 cells were surface-stained with ABflo® 647 Rabbit IgG isotype control (A22070, 5 μ l/Test, left) or ABflo® 647 Rabbit anti-Human CD213a1/IL-13R α 1 mAb (A24284, 5 μ l/Test, right).