

# ABflo® 594 Rabbit anti-Human CD213a1/IL-13Rα1 mAb

Catalog No.: A24285

## Basic Information

### Observed MW

### Calculated MW

31kDa/48kDa

### Category

Primary antibody

### Applications

FC

### Cross-Reactivity

Human

### CloneNo number

ARC62791-ABflo594

### Conjugate

ABflo® 594. Ex:588nm. Em:604nm.

## Recommended Dilutions

FC 5 µl per 10<sup>6</sup> cells in  
100 µl volume

## Background

The protein encoded by this gene is a subunit of the interleukin 13 receptor. This subunit forms a receptor complex with IL4 receptor alpha, a subunit shared by IL13 and IL4 receptors. This subunit serves as a primary IL13-binding subunit of the IL13 receptor, and may also be a component of IL4 receptors. This protein has been shown to bind tyrosine kinase TYK2, and thus may mediate the signaling processes that lead to the activation of JAK1, STAT3 and STAT6 induced by IL13 and IL4.

## Immunogen Information

### Gene ID

3597

### Swiss Prot

P78552

### Immunogen

Recombinant fusion protein containing a sequence corresponding to amino acids 29-343 of human CD213a1/IL-13Rα1 (NP\_001551.1).

### Synonyms

IL13RA1; CD213A1; CT19; IL-13Ra; NR4; interleukin-13 receptor subunit alpha-1

## Contact

 | 400-999-6126

 | [cn.market@abclonal.com.cn](mailto:cn.market@abclonal.com.cn)

 | [www.abclonal.com.cn](http://www.abclonal.com.cn)

## Product Information

### Source

Rabbit

### Isotype

IgG

### Purification

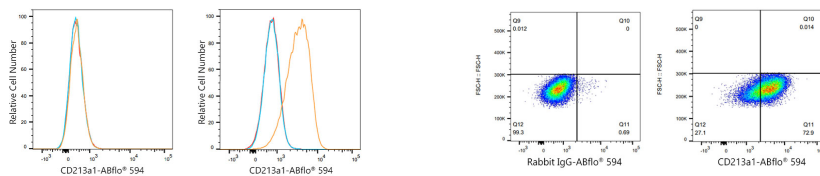
Affinity purification

### Storage

Store at 2-8°C. Avoid freeze.

Buffer: PBS with 0.03% proclin300,0.2% BSA,pH7.3.

## Validation Data



Flow cytometry:  $1 \times 10^6$  Jurkat cells (negative control, left) and MCF7 cells (right) were surface-stained with ABflo® 594 Rabbit anti-Human CD213a1/IL-13R $\alpha$ 1 mAb (A24285, 5  $\mu$ l/Test, orange line) or ABflo® 594 Rabbit IgG isotype control (A23821, 5  $\mu$ l/Test, blue line). Non-fluorescently stained cells were used as blank control (red line).

Flow cytometry:  $1 \times 10^6$  MCF7 cells were surface-stained with ABflo® 594 Rabbit IgG isotype control (A23821, 5  $\mu$ l/Test, left) or ABflo® 594 Rabbit anti-Human CD213a1/IL-13R $\alpha$ 1 mAb (A24285, 5  $\mu$ l/Test, right).