

IL-13 receptor alpha 1 Rabbit mAb

Catalog No.: A24286 **Recombinant**

Basic Information

Observed MW

Refer to figures

Calculated MW

49kDa

Category

Primary antibody

Applications

ELISA,FC

Cross-Reactivity

Human

CloneNo number

ARC62791

Background

The protein encoded by this gene is a subunit of the interleukin 13 receptor. This subunit forms a receptor complex with IL4 receptor alpha, a subunit shared by IL13 and IL4 receptors. This subunit serves as a primary IL13-binding subunit of the IL13 receptor, and may also be a component of IL4 receptors. This protein has been shown to bind tyrosine kinase TYK2, and thus may mediate the signaling processes that lead to the activation of JAK1, STAT3 and STAT6 induced by IL13 and IL4.

Recommended Dilutions

FC 1:500 - 1:1000

Immunogen Information

Gene ID

3597

Swiss Prot

P78552

Immunogen

Recombinant fusion protein containing a sequence corresponding to amino acids of human IL-13 receptor alpha 1 (NP_001551.1).

Synonyms

NR4; CT19; CD213A1; IL-13Ra; IL-13 receptor alpha 1

Contact

☎ | 400-999-6126

✉ | cn.market@abclonal.com.cn

🌐 | www.abclonal.com.cn

Product Information

Source

Rabbit

Isotype

IgG

Purification

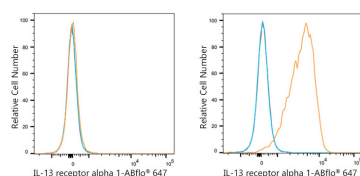
Affinity purification

Storage

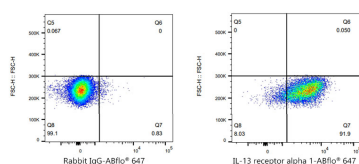
Store at -20°C. Avoid freeze / thaw cycles.

Buffer: PBS with 0.05% proclin300,0.05% BSA,50% glycerol,pH7.3.

Validation Data



Flow cytometry: 1×10^6 Jurkat cells (negative control, left) and MCF7 cells (right) were surface-stained with ABflo® 647 Rabbit anti-Human IL-13 receptor alpha 1 Rabbit mAb (A24286, 2 $\mu\text{g/mL}$, orange line) or ABflo® 647 Rabbit IgG isotype control (A22070, 2 $\mu\text{g/mL}$, blue line). Non-fluorescently stained cells were used as blank control (red line).



Flow cytometry: 1×10^6 MCF7 cells were surface-stained with ABflo® 647 Rabbit IgG isotype control (A22070, 2 $\mu\text{g/mL}$, left) or IL-13 receptor alpha 1 Rabbit mAb (A24286, 2 $\mu\text{g/mL}$, right).