

# Apolipoprotein A1/APOA1 Rabbit mAb

Catalog No.: A24291 **Recombinant**

## Basic Information

### Observed MW

28kDa

### Calculated MW

28kDa

### Category

Primary antibody

### Applications

WB,IF/ICC,IP,ELISA

### Cross-Reactivity

Human, Mouse

### CloneNo number

ARC63063

## Background

This gene encodes apolipoprotein A-I, which is the major protein component of high density lipoprotein (HDL) in plasma. The encoded preproprotein is proteolytically processed to generate the mature protein, which promotes cholesterol efflux from tissues to the liver for excretion, and is a cofactor for lecithin cholesterolacyltransferase (LCAT), an enzyme responsible for the formation of most plasma cholesteryl esters. This gene is closely linked with two other apolipoprotein genes on chromosome 11. Defects in this gene are associated with HDL deficiencies, including Tangier disease, and with systemic non-neuropathic amyloidosis. Alternative splicing results in multiple transcript variants, at least one of which encodes a preproprotein.

## Recommended Dilutions

**WB** 1:2000 - 1:4000

**IF/ICC** 1:200 - 1:800

**IP** 0.5µg-4µg antibody for  
200µg-400µg extracts of  
whole cells

**ELISA** Recommended starting  
concentration is 1 µg/mL.  
Please optimize the  
concentration based on  
your specific assay  
requirements.

## Contact

 | 400-999-6126

 | [cn.market@abclonal.com.cn](mailto:cn.market@abclonal.com.cn)

 | [www.abclonal.com.cn](http://www.abclonal.com.cn)

## Immunogen Information

### Gene ID

335

### Swiss Prot

P02647

### Immunogen

Recombinant fusion protein containing a sequence corresponding to amino acids 25-267 of human Apolipoprotein A1/APOA1 (NP\_000030.1).

### Synonyms

HPALP2; apo(a); Apolipoprotein A1/APOA1

## Product Information

### Source

Rabbit

### Isotype

IgG

### Purification

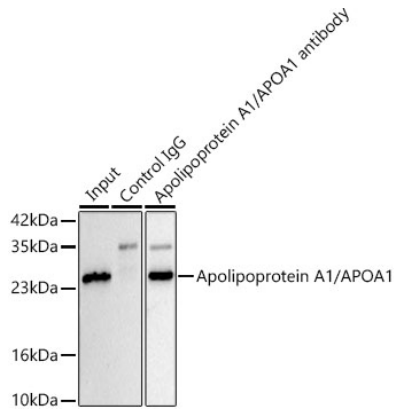
Affinity purification

### Storage

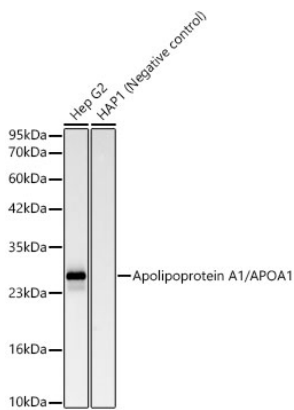
Store at -20°C. Avoid freeze / thaw cycles.

Buffer: PBS with 0.05% proclin300,0.05% BSA,50% glycerol,pH7.3.

## Validation Data



Immunoprecipitation analysis of 300ug extracts of Hep G2 cells using 3ug Apolipoprotein A1/APOA1 Rabbit mAb (A24291). Western blot was performed from the immunoprecipitate using Apolipoprotein A1/APOA1 Rabbit mAb (A24290) at a dilution of 1:2000.



Western blot analysis of various lysates, using Apolipoprotein A1/APOA1 Rabbit mAb (A24291) at 1:2000 dilution.

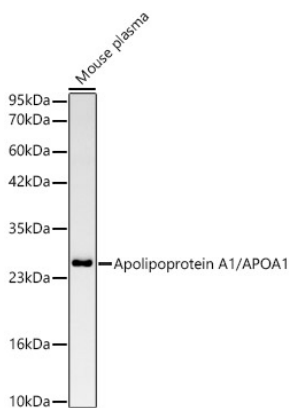
Secondary antibody: HRP-conjugated Goat anti-Rabbit IgG (H+L) (AS014) at 1:10000 dilution.

Lysates/proteins: 25µg per lane.

Blocking buffer: 3% nonfat dry milk in TBST.

Detection: ECL Basic Kit (RM00020).

Exposure time: 30s.



Western blot analysis of lysates from Mouse plasma, using Apolipoprotein A1/APOA1 Rabbit mAb (A24291) at 1:2000 dilution.

Secondary antibody: HRP-conjugated Goat anti-Rabbit IgG (H+L) (AS014) at 1:10000 dilution.

Lysates/proteins: 25µg per lane.

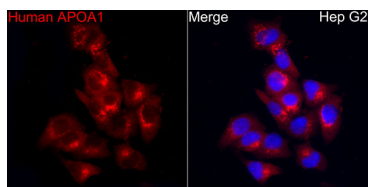
Blocking buffer: 3% nonfat dry milk in TBST.

Detection: ECL Basic Kit (RM00020).

Exposure time: 60s.

## Validation Data

---



Immunofluorescence analysis of HepG2 cells using Apolipoprotein A1/APOA1 Rabbit mAb (A24291) at dilution of 1:200 (40x lens). Secondary antibody: Cy3-conjugated Goat anti-Rabbit IgG (H+L) (AS007) at 1:500 dilution. Blue: DAPI for nuclear staining.