

EIF4A1/EIF4A2/EIF4A3 Rabbit mAb

Catalog No.: A24293 **Recombinant**

Basic Information

Observed MW

46kDa

Calculated MW

46kDa

Category

Primary antibody

Applications

ELISA, WB, IHC-P, IF/ICC, IP

Cross-Reactivity

Human, Mouse, Rat

CloneNo number

ARC56701

Background

ATP-dependent RNA helicase which is a subunit of the eIF4F complex involved in cap recognition and is required for mRNA binding to ribosome. In the current model of translation initiation, eIF4A unwinds RNA secondary structures in the 5'-UTR of mRNAs which is necessary to allow efficient binding of the small ribosomal subunit, and subsequent scanning for the initiator codon.

Recommended Dilutions

WB	1:2000 - 1:20000
IHC-P	1:50 - 1:200
IF/ICC	1:50 - 1:200
IP	0.5µg-4µg antibody for 200µg-600µg extracts of whole cells

Contact

☎ | 400-999-6126

✉ | cn.market@abclonal.com.cn

🌐 | www.abclonal.com.cn

Immunogen Information

Gene ID

1973/1974/9775

Swiss Prot

P60842/Q14240/P38919

Immunogen

A synthetic peptide corresponding to a sequence within amino acids 1-100 of human EIF4A1/EIF4A2/EIF4A3 (NP_001407.1/NP_001958.2/NP_055555.1).

Synonyms

DDX2A; EIF4A; EIF-4A; eIF4A-I; eIF-4A-I; DDX2B; EIF4F; BM-010; eIF4A-II; eIF-4A-II; Fal1; RCPS; DDX48; MUK34; NUK34; NMP265; eIF4AIII; eIF4A-III; eIF-4A-III; EIF4A1/EIF4A2/EIF4A3

Product Information

Source

Rabbit

Isotype

IgG

Purification

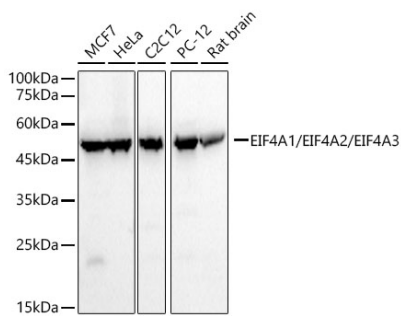
Affinity purification

Storage

Store at -20°C. Avoid freeze / thaw cycles.

Buffer: PBS with 0.05% proclin300, 0.05% BSA, 50% glycerol, pH7.3.

Validation Data



Western blot analysis of various lysates, using EIF4A1/EIF4A2/EIF4A3 Rabbit mAb (A24293) at 1:20000 dilution.

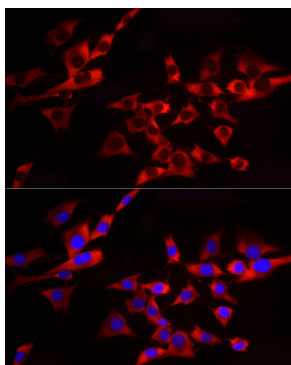
Secondary antibody: HRP Goat Anti-Rabbit IgG (H+L) (AS014) at 1:10000 dilution.

Lysates/proteins: 25ug per lane.

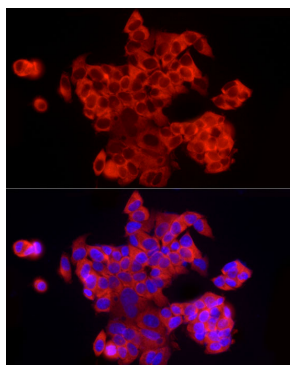
Blocking buffer: 3% nonfat dry milk in TBST.

Detection: ECL Basic Kit (RM00020).

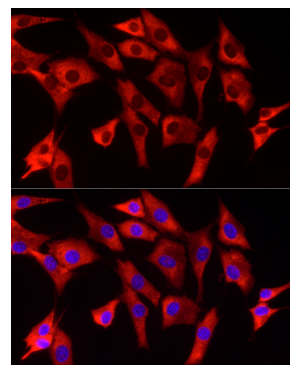
Exposure time: 30s.



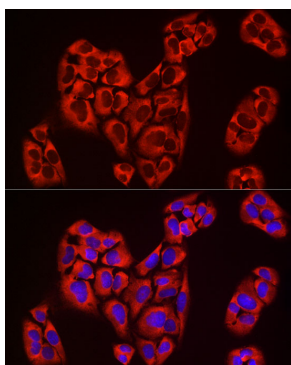
Immunofluorescence analysis of C6 cells using EIF4A1/EIF4A2/EIF4A3 Rabbit mAb (A24293) at dilution of 1:200 (40x lens). Secondary antibody: Cy3 Goat Anti-Rabbit IgG (H+L) (AS007) at 1:500 dilution. Blue: DAPI for nuclear staining.



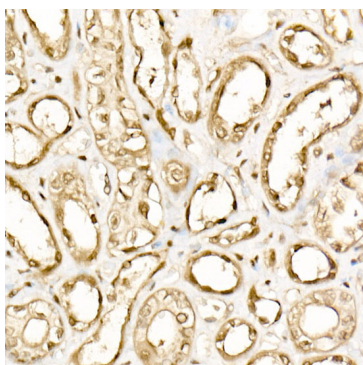
Immunofluorescence analysis of MCF7 cells using EIF4A1/EIF4A2/EIF4A3 Rabbit mAb (A24293) at dilution of 1:200 (40x lens). Secondary antibody: Cy3 Goat Anti-Rabbit IgG (H+L) (AS007) at 1:500 dilution. Blue: DAPI for nuclear staining.



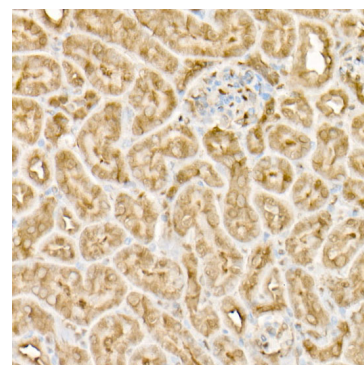
Immunofluorescence analysis of NIH/3T3 cells using EIF4A1/EIF4A2/EIF4A3 Rabbit mAb (A24293) at dilution of 1:200 (40x lens). Secondary antibody: Cy3 Goat Anti-Rabbit IgG (H+L) (AS007) at 1:500 dilution. Blue: DAPI for nuclear staining.



Immunofluorescence analysis of U-2 OS cells using EIF4A1/EIF4A2/EIF4A3 Rabbit mAb (A24293) at dilution of 1:200 (40x lens). Secondary antibody: Cy3 Goat Anti-Rabbit IgG (H+L) (AS007) at 1:500 dilution. Blue: DAPI for nuclear staining.

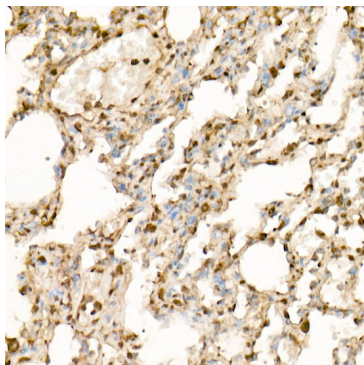


Immunohistochemistry analysis of EIF4A1/EIF4A2/EIF4A3 in paraffin-embedded human kidney using EIF4A1/EIF4A2/EIF4A3 Rabbit mAb (A24293) at dilution of 1:200 (40x lens). Perform high pressure antigen retrieval with 10 mM citrate buffer pH 6.0 before commencing with IHC staining protocol.



Immunohistochemistry analysis of EIF4A1/EIF4A2/EIF4A3 in paraffin-embedded mouse kidney using EIF4A1/EIF4A2/EIF4A3 Rabbit mAb (A24293) at dilution of 1:200 (40x lens). Perform high pressure antigen retrieval with 10 mM citrate buffer pH 6.0 before commencing with IHC staining protocol.

Validation Data



Immunohistochemistry analysis of EIF4A1/EIF4A2/EIF4A3 in paraffin-embedded rat lung using EIF4A1/EIF4A2/EIF4A3 Rabbit mAb (A24293) at dilution of 1:200 (40x lens). Perform high pressure antigen retrieval with 10 mM citrate buffer pH 6.0 before commencing with IHC staining protocol.