

NLRP3 Rabbit mAb

Catalog No.: A24294

Recombinant

26 Publications

Basic Information

Observed MW

118kDa

Calculated MW

118kDa

Category

Primary antibody

Applications

WB,IF/ICC,IP,ELISA

Cross-Reactivity

Mouse

CloneNo number

ARC62768

Background

Enables DNA-binding transcription factor binding activity and sequence-specific DNA binding activity. Involved in several processes, including positive regulation of T-helper cell differentiation; positive regulation of cytokine production; and response to bacterium. Acts upstream of or within several processes, including NLRP3 inflammasome complex assembly; activation of cysteine-type endopeptidase activity involved in apoptotic process; and defense response to virus. Located in cytoplasm and nucleus. Part of NLRP3 inflammasome complex. Is expressed in central nervous system and retina. Used to study CINCA Syndrome; familial cold autoinflammatory syndrome 1; and non-alcoholic fatty liver disease. Human ortholog(s) of this gene implicated in CINCA Syndrome; Muckle-Wells syndrome; autosomal dominant nonsyndromic deafness 34; familial cold autoinflammatory syndrome 1; and urticaria. Orthologous to human NLRP3 (NLR family pyrin domain containing 3).

Recommended Dilutions

WB 1:1000 - 1:6000**IF/ICC** 1:100 - 1:500**IP** 0.5µg-4µg antibody for
200µg-400µg extracts of
whole cells**ELISA** Recommended starting
concentration is 1 µg/mL.
Please optimize the
concentration based on
your specific assay
requirements.

Contact

 | 400-999-6126 | cn.market@abclonal.com.cn | www.abclonal.com.cn

Immunogen Information

Gene ID

216799

Swiss Prot

Q8R4B8

Immunogen

Recombinant protein (or fragment). This information is considered to be commercially sensitive.

Synonyms

FCU; MWS; FCAS; Cias1; Mmig1; NALP3; Pypaf1; Ail/AVP; AGTAVPRL; NLRP3

Product Information

Source

Rabbit

Isotype

IgG

Purification

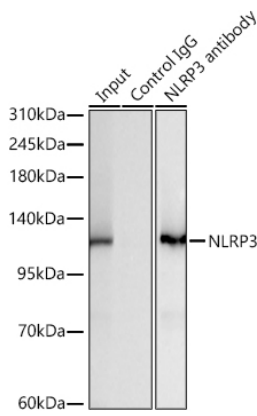
Affinity purification

Storage

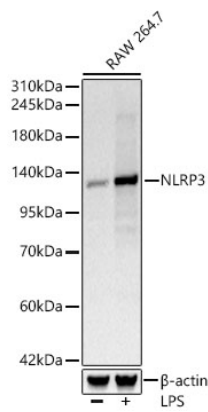
Store at -20°C. Avoid freeze / thaw cycles.

Buffer: PBS with 0.09% Sodium azide, 0.05% BSA, 50% glycerol, pH7.3.

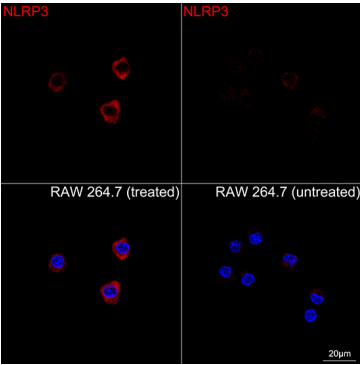
Validation Data



Immunoprecipitation of NLRP3 from 300 µg extracts of RAW 264.7 cells treated with LPS (1 µg/ml, 8h) was performed using 3 µg of NLRP3 Rabbit mAb (A24294). Rabbit IgG isotype control (AC042) was used to precipitate the Control IgG sample. IP samples were eluted with 1X Laemmli Buffer. The Input lane represents 10% of the total input. Western blot analysis of immunoprecipitates was conducted using NLRP3 Rabbit mAb (A24294) at a dilution of 1:2000.



Western blot analysis of lysates from RAW 264.7 cells, using NLRP3 Rabbit mAb (A24294) at 1:1000 dilution. Raw264. 7 cells were treated with LPS (1 µg/ml) at 37°C for 8 hours. Secondary antibody: HRP-conjugated Goat anti-Rabbit IgG (H+L) (AS014) at 1:10000 dilution. Lysates/proteins: 25µg per lane. Blocking buffer: 3% nonfat dry milk in TBST. Detection: ECL Basic Kit (RM00020). Exposure time: 10s.



Confocal imaging of RAW 264.7 cells (treated with LPS) and RAW 264.7 cells (untreated) using NLRP3 Rabbit mAb (A24294, dilution 1:200) followed by a further incubation with Cy3 Goat Anti-Rabbit IgG (H+L) (AS007, dilution 1:500) (Red). DAPI was used for nuclear staining (Blue). Objective: 100x.