

NCR3 Rabbit mAb

Catalog No.: A24295 **Recombinant**

Basic Information

Observed MW

30kDa

Calculated MW

16kDa/17kDa/18kDa/19kDa/20kDa/21kDa

Category

Primary antibody

Applications

ELISA, WB, IF/ICC, FC (intra)

Cross-Reactivity

Human

CloneNo number

ARC60018

Recommended Dilutions

WB	1:500 - 1:1000
IF/ICC	1:50 - 1:200
FC (intra)	1:500 - 1:1000

Background

The protein encoded by this gene is a natural cytotoxicity receptor (NCR) that may aid NK cells in the lysis of tumor cells. The encoded protein interacts with CD3-zeta (CD247), a T-cell receptor. A single nucleotide polymorphism in the 5' untranslated region of this gene has been associated with mild malaria susceptibility. Three transcript variants encoding different isoforms have been found for this gene.

Immunogen Information

Gene ID	Swiss Prot
259197	O14931

Immunogen

Recombinant fusion protein containing a sequence corresponding to amino acids 19-135 of human CD337/NKp30 (NP_667341.1).

Synonyms

NCR3; 1C7; CD337; LY117; MALS; NKp30; natural cytotoxicity triggering receptor 3

Contact

	400-999-6126
	cn.market@abclonal.com.cn
	www.abclonal.com.cn

Product Information

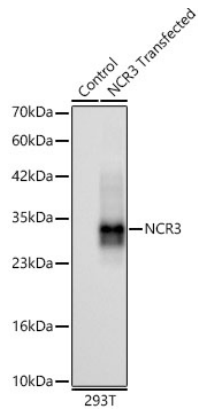
Source	Isotype	Purification
Rabbit	IgG	Affinity purification

Storage

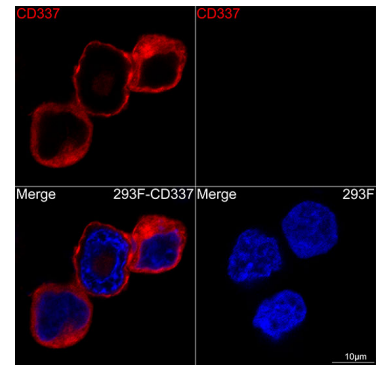
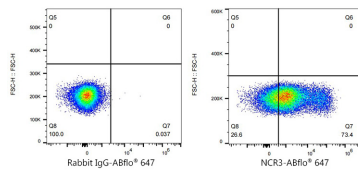
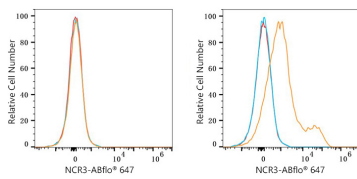
Store at -20°C. Avoid freeze / thaw cycles.

Buffer: PBS with 0.05% proclin300, 0.05% BSA, 50% glycerol, pH7.3.

Validation Data



Western blot analysis of lysates from control 293T and NCR3-293T transfected cells, using NCR3 Rabbit mAb (A24295) at 1:1000 dilution.
 Secondary antibody: HRP Goat Anti-Rabbit IgG (H+L) (AS014) at 1:10000 dilution.
 Lysates/proteins: 25ug per lane.
 Blocking buffer: 3% nonfat dry milk in TBST.
 Detection: ECL Basic Kit (RM00020).
 Exposure time: 60s.



Flow cytometry: 1×10^6 293T cells (Low Expression, left) and 293T (Transfection, right) cells were intracellularly-stained with NCR3 Rabbit mAb (A24295, 2 µg/mL, orange line) or ABflo® 647 Rabbit IgG isotype control (A22070, 2 µg/mL, blue line), followed by Alexa Fluor® 647 conjugated goat anti-rabbit pAb (1:200 dilution) staining. Non-fluorescently stained cells were used as blank control (red line).

Flow cytometry: 1×10^6 293T (Transfection) cells were intracellularly-stained with ABflo® 647 Rabbit IgG isotype control (A22070, 2 µg/mL, left) or NCR3 Rabbit mAb (A24295, 2 µg/mL, right).

Confocal imaging of 293F-CD337 and 293F cells using NCR3 Rabbit mAb (A24295, at dilution of 1:200) (Red). DAPI was used for nuclear staining (blue). Objective: 100x.