

NLRP3 Rabbit pAb

Catalog No.: A24297

Basic Information

Observed MW

Refer to figures

Calculated MW

118kDa

Category

Primary antibody

Applications

ELISA,IF/ICC

Cross-Reactivity

Rat

Background

Enables DNA-binding transcription factor binding activity and sequence-specific DNA binding activity. Involved in several processes, including positive regulation of T-helper cell differentiation; positive regulation of cytokine production; and response to bacterium. Acts upstream of or within several processes, including NLRP3 inflammasome complex assembly; activation of cysteine-type endopeptidase activity involved in apoptotic process; and defense response to virus. Located in cytoplasm and nucleus. Part of NLRP3 inflammasome complex. Is expressed in central nervous system and retina. Used to study CINCA Syndrome; familial cold autoinflammatory syndrome 1; and non-alcoholic fatty liver disease. Human ortholog(s) of this gene implicated in CINCA Syndrome; Muckle-Wells syndrome; autosomal dominant nonsyndromic deafness 34; familial cold autoinflammatory syndrome 1; and urticaria. Orthologous to human NLRP3 (NLR family pyrin domain containing 3).

Recommended Dilutions

IF/ICC 1:50 - 1:200

Immunogen Information

Gene ID

216799

Swiss Prot

Q8R4B8

Immunogen

Recombinant fusion protein containing a sequence corresponding to amino acids 1-93 of mouse NLRP3(NP_665826.1).

Synonyms

FCU; MWS; FCAS; Cias1; Mmig1; NALP3; Pypaf1; Ail/AVP; AGTAVPRL; NLRP3

Contact

 | 400-999-6126 | cn.market@abclonal.com.cn | www.abclonal.com.cn

Product Information

Source

Rabbit

Isotype

IgG

Purification

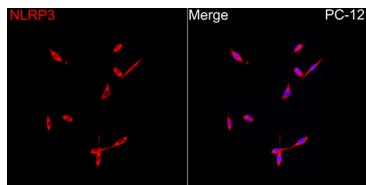
Affinity purification

Storage

Store at -20°C. Avoid freeze / thaw cycles.

Buffer: PBS with 0.05% proclin300,50% glycerol,pH7.3.

Validation Data



Immunofluorescence analysis of PC-12 cells using NLRP3 Rabbit pAb (A24297) at a dilution of 1:50 (40x lens). Secondary antibody: Cy3 Goat Anti-Rabbit IgG (H+L) (AS007) at 1:500 dilution. Blue: DAPI for nuclear staining.