

Ch25h Rabbit pAb

Catalog No.: A24299

Basic Information

Observed MW

32kDa

Calculated MW

31kDa

Category

Primary antibody

Applications

ELISA, WB

Cross-Reactivity

Mouse

Background

Enables cholesterol 25-hydroxylase activity. Involved in B cell chemotaxis. Acts upstream of or within cholesterol metabolic process. Predicted to be located in endoplasmic reticulum. Predicted to be integral component of membrane. Predicted to be active in endoplasmic reticulum membrane. Is expressed in several structures, including genitourinary system; gut; hemolymphoid system gland; respiratory system; and skin. Orthologous to human CH25H (cholesterol 25-hydroxylase).

Recommended Dilutions

WB 1:500 - 1:1000

Immunogen Information

Gene ID

9023

Swiss Prot

O95992

Immunogen

A synthetic peptide corresponding to a sequence within amino acids 171-270 of human Ch25h (NP_003947.1).

Synonyms

m250H; Ch25h

Contact

☎ | 400-999-6126

✉ | cn.market@abclonal.com.cn

🌐 | www.abclonal.com.cn

Product Information

Source

Rabbit

Isotype

IgG

Purification

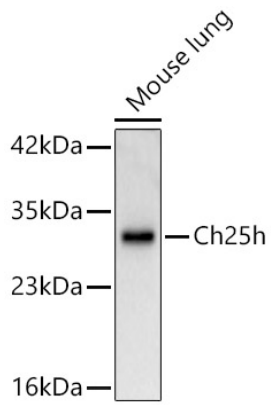
Affinity purification

Storage

Store at -20°C. Avoid freeze / thaw cycles.

Buffer: PBS with 0.05% proclin300, 50% glycerol, pH7.3.

Validation Data



Western blot analysis of lysates from Mouse lung, using Ch25h Rabbit pAb (A24299) at 1:1000 dilution.
Secondary antibody: HRP Goat Anti-Rabbit IgG (H+L) (AS014) at 1:10000 dilution.
Lysates/proteins: 25ug per lane.
Blocking buffer: 3% nonfat dry milk in TBST.
Detection: ECL Basic Kit (RM00020).
Exposure time: 30s.