

ABflo® 647 Rabbit anti-Human CD47 mAb

Catalog No.: A24301

Basic Information

Observed MW

Refer to figures

Calculated MW

31kDa/33kDa/35kDa

Category

Primary antibody

Applications

FC

Cross-Reactivity

Human

CloneNo number

ARC61212-ABflo647

Conjugate

ABflo® 647. Ex:648nm. Em:664nm.

Recommended Dilutions

FC 5 µl per 10⁶ cells in
100 µl volume

Background

This gene encodes a membrane protein, which is involved in the increase in intracellular calcium concentration that occurs upon cell adhesion to extracellular matrix. The encoded protein is also a receptor for the C-terminal cell binding domain of thrombospondin, and it may play a role in membrane transport and signal transduction. This gene has broad tissue distribution, and is reduced in expression on Rh erythrocytes. Alternatively spliced transcript variants have been found for this gene.

Immunogen Information

Gene ID

961

Swiss Prot

Q08722

Immunogen

Recombinant fusion protein containing a sequence corresponding to amino acids 19-139 of human CD47 (NP_001768.1).

Synonyms

CD47; IAP; MER6; OA3; CD47 molecule

Contact

☎ | 400-999-6126

✉ | cn.market@abclonal.com.cn

🌐 | www.abclonal.com.cn

Product Information

Source

Rabbit

Isotype

IgG

Purification

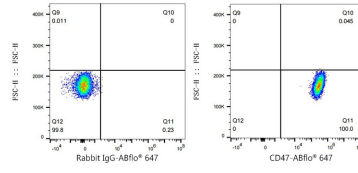
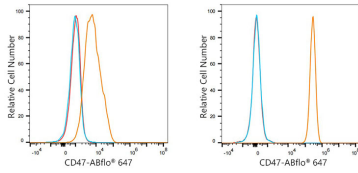
Affinity purification

Storage

Store at 2-8°C. Avoid freeze.

Buffer: PBS with 0.03% proclin300,0.2% BSA,pH7.3.

Validation Data



Flow cytometry: 1×10^6 HepG2 cells (Low Expression, Left) and MOLT-4 cells (Right) were surface-stained with ABflo® 647 Rabbit anti-Human CD47 mAb (A24301, 5 μ l/Test, orange line) or ABflo® 647 Rabbit IgG isotype control (A22070, 5 μ l/Test, blue line). Non-fluorescently stained cells were used as blank control (red line).

Flow cytometry: 1×10^6 MOLT-4 cells were surface-stained with ABflo® 647 Rabbit IgG isotype control (A22070, 5 μ l/Test, left) or ABflo® 647 Rabbit anti-Human CD47 mAb (A24301, 5 μ l/Test, right).