

ABflo® 488 Rabbit anti-Human Lambda Light Chain mAb

Catalog No.: A24303

Basic Information

Observed MW

Calculated MW

11kDa

Category

Primary antibody

Applications

FC

Cross-Reactivity

Human

CloneNo number

ARC60732-ABflo488

Conjugate

ABflo® 488. Ex:491nm. Em:516nm.

Recommended Dilutions

FC 5 µl per 10⁶ cells in
100 µl volume

Background

Immunogen Information

Gene ID

Swiss Prot

P0CG04

Immunogen

Recombinant fusion protein containing a sequence corresponding to amino acids 1-106 of human Lambda Light Chain.

Synonyms

Contact

☎ | 400-999-6126

✉ | cn.market@abclonal.com.cn

🌐 | www.abclonal.com.cn

Product Information

Source

Rabbit

Isotype

IgG

Purification

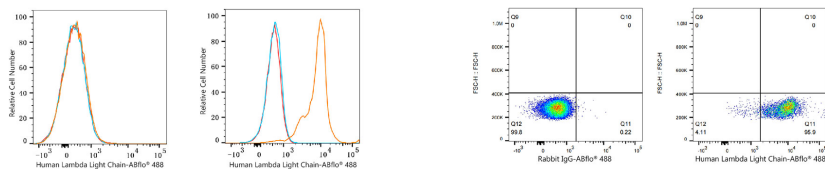
Affinity purification

Storage

Store at 2-8°C. Avoid freeze.

Buffer: PBS with 0.03% proclin300,0.2% BSA,pH7.3.

Validation Data



Flow cytometry: 1×10^6 HAP1 cells (negative control, Left) and Human PBMC cells (Right) were surface-stained with ABflo® 488 Rabbit anti-Human Lambda Light Chain mAb (A24303, 5 μ l/Test, orange line) or ABflo® 488 Rabbit IgG isotype control (A22069, 5 μ l/Test, blue line). Non-fluorescently stained cells were used as blank control (red line).

Flow cytometry: 1×10^6 Human PBMC cells were surface-stained with ABflo® 488 Rabbit IgG isotype control (A22069, 5 μ l/Test, left) or ABflo® 488 Rabbit anti-Human Lambda Light Chain mAb (A24303, 5 μ l/Test, right).