

# ABflo® 647 Rabbit anti-Human Lambda Light Chain mAb

Catalog No.: A24304

## Basic Information

---

### Observed MW

### Calculated MW

11kDa

### Category

Primary antibody

### Applications

FC

### Cross-Reactivity

Human

### CloneNo number

ARC60732-ABflo647

### Conjugate

ABflo® 647. Ex:648nm. Em:664nm.

## Recommended Dilutions

---

FC 5 µl per 10<sup>6</sup> cells in  
100 µl volume

## Background

---

## Immunogen Information

---

### Gene ID

### Swiss Prot

P0CG04


### Immunogen

Recombinant fusion protein containing a sequence corresponding to amino acids 1-106 of human Lambda Light Chain.

### Synonyms

## Contact

---

 | 400-999-6126

 | [cn.market@abclonal.com.cn](mailto:cn.market@abclonal.com.cn)

 | [www.abclonal.com.cn](http://www.abclonal.com.cn)

## Product Information

---

### Source

Rabbit

### Isotype

IgG

### Purification

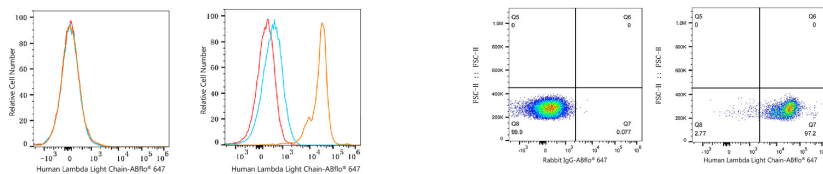
Affinity purification

### Storage

Store at 2-8°C. Avoid freeze.

Buffer: PBS with 0.03% proclin300,0.2% BSA,pH7.3.

## Validation Data



Flow cytometry:  $1 \times 10^6$  HAP1 cells (negative control, Left) and Human PBMC cells (Right) were surface-stained with ABflo® 647 Rabbit anti-Human Lambda Light Chain mAb (A24304, 5  $\mu$ l/Test, orange line) or ABflo® 647 Rabbit IgG isotype control (A22070, 5  $\mu$ l/Test, blue line). Non-fluorescently stained cells were used as blank control (red line).

Flow cytometry:  $1 \times 10^6$  Human PBMC cells were surface-stained with ABflo® 647 Rabbit IgG isotype control (A22070, 5  $\mu$ l/Test, left) or ABflo® 647 Rabbit anti-Human Lambda Light Chain mAb (A24304, 5  $\mu$ l/Test, right).