

ABflo® 488 Rabbit anti-Human CD62E/E-Selectin mAb

Catalog No.: A24308

Basic Information

Observed MW

Refer to figures

Calculated MW

66kDa

Category

Primary antibody

Applications

FC

Cross-Reactivity

Human

CloneNo number

ARC61987-ABflo488

Conjugate

ABflo® 488. Ex:491nm. Em:516nm.

Recommended Dilutions

FC 5 µl per 10⁶ cells in
100 µl volume

Background

The protein encoded by this gene is found in cytokine-stimulated endothelial cells and is thought to be responsible for the accumulation of blood leukocytes at sites of inflammation by mediating the adhesion of cells to the vascular lining. It exhibits structural features such as the presence of lectin- and EGF-like domains followed by short consensus repeat (SCR) domains that contain 6 conserved cysteine residues. These proteins are part of the selectin family of cell adhesion molecules. Adhesion molecules participate in the interaction between leukocytes and the endothelium and appear to be involved in the pathogenesis of atherosclerosis.

Immunogen Information

Gene ID

6401

Swiss Prot

P16581

Immunogen

Recombinant fusion protein containing a sequence corresponding to amino acids 22-230 of human CD62E/E-Selectin (NP_000441.2).

Synonyms

SELE; CD62E; ELAM; ELAM1; ESEL; LECAM2; E-selectin

Contact

 | 400-999-6126

 | cn.market@abclonal.com.cn

 | www.abclonal.com.cn

Product Information

Source

Rabbit

Isotype

IgG

Purification

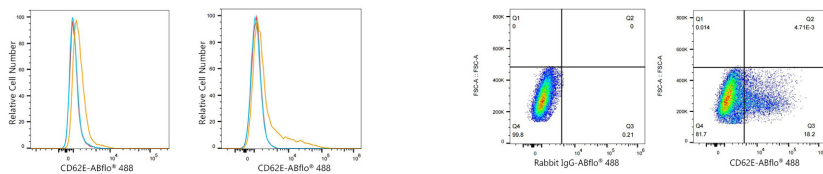
Affinity purification

Storage

Store at 2-8°C. Avoid freeze.

Buffer: PBS with 0.03% proclin300,0.2% BSA,pH7.3.

Validation Data



Flow cytometry: 1×10^6 HUVEC cells (negative control, Left) and HUVEC cells (treated with TNF- α , Right) were surface-stained with ABflo® 488 Rabbit anti-Human CD62E/E-Selectin mAb (A24308, 5 μ l/Test, orange line) or ABflo® 488 Rabbit IgG isotype control (A22069, 5 μ l/Test, blue line). Non-fluorescently stained cells were used as blank control (red line).

Flow cytometry: 1×10^6 HUVEC cells (treated with TNF- α , Right) were surface-stained with ABflo® 488 Rabbit IgG isotype control (A22069, 5 μ l/Test, left) or ABflo® 488 Rabbit anti-Human CD62E/E-Selectin mAb (A24308, 5 μ l/Test, right).