

# ABflo® 647 Rabbit anti-Human CD62E/E-Selectin mAb

Catalog No.: A24309

## Basic Information

### Observed MW

Refer to figures

### Calculated MW

66kDa

### Category

Primary antibody

### Applications

FC

### Cross-Reactivity

Human

### CloneNo number

ARC61987

### Conjugate

ABflo® 647. Ex:648nm. Em:664nm.

## Recommended Dilutions

**FC** 5 µl per 10<sup>6</sup> cells in  
100 µl volume

## Background

The protein encoded by this gene is found in cytokine-stimulated endothelial cells and is thought to be responsible for the accumulation of blood leukocytes at sites of inflammation by mediating the adhesion of cells to the vascular lining. It exhibits structural features such as the presence of lectin- and EGF-like domains followed by short consensus repeat (SCR) domains that contain 6 conserved cysteine residues. These proteins are part of the selectin family of cell adhesion molecules. Adhesion molecules participate in the interaction between leukocytes and the endothelium and appear to be involved in the pathogenesis of atherosclerosis.

## Immunogen Information

### Gene ID

6401

### Swiss Prot

P16581

### Immunogen

Recombinant protein (or fragment). This information is considered to be commercially sensitive.

### Synonyms

SELE; CD62E; ELAM; ELAM1; ESEL; LECAM2; E-selectin

## Contact

☎ | 400-999-6126

✉ | [cn.market@abclonal.com.cn](mailto:cn.market@abclonal.com.cn)

🌐 | [www.abclonal.com.cn](http://www.abclonal.com.cn)

## Product Information

### Source

Rabbit

### Isotype

IgG

### Purification

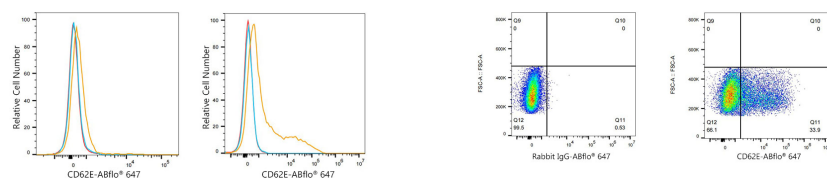
Affinity purification

### Storage

Store at 2-8°C. Avoid freeze.

Buffer: PBS containing 0.2% BSA, preserved with proclin300 or sodium azide (as specified on the Certificate of Analysis), pH 7.3.

## Validation Data



Flow cytometry:  $1 \times 10^6$  HUVEC cells (negative control, Left) and HUVEC cells (treated with  $\text{TNF-}\alpha$ , Right) were surface-stained with ABflo® 647 Rabbit anti-Human CD62E/E-Selectin mAb (A24309, 5  $\mu\text{l}/\text{Test}$ , orange line) or ABflo® 647 Rabbit IgG isotype control (A22070, 5  $\mu\text{l}/\text{Test}$ , blue line). Non-fluorescently stained cells were used as blank control (red line).

Flow cytometry:  $1 \times 10^6$  HUVEC cells (treated with  $\text{TNF-}\alpha$ , Right) were surface-stained with ABflo® 647 Rabbit IgG isotype control (A22070, 5  $\mu\text{l}/\text{Test}$ , left) or ABflo® 647 Rabbit anti-Human CD62E/E-Selectin mAb (A24309, 5  $\mu\text{l}/\text{Test}$ , right).