

# ABflo® 647 Rabbit anti-Human CD303/BDCA-2 mAb

Catalog No.: A24312

## Basic Information

### Observed MW

Refer to figures

### Calculated MW

21kDa/25kDa

### Category

Primary antibody

### Applications

FC

### Cross-Reactivity

Human

### CloneNo number

ARC61690-ABflo647

### Conjugate

ABflo® 647. Ex:648nm. Em:664nm.

## Recommended Dilutions

FC 5 µl per 10<sup>6</sup> cells in  
100 µl volume

## Background

This gene encodes a member of the C-type lectin/C-type lectin-like domain (CTL/CTLD) superfamily. Members of this family share a common protein fold and have diverse functions, such as cell adhesion, cell-cell signalling, glycoprotein turnover, and roles in inflammation and immune response. The encoded type 2 transmembrane protein may play a role in dendritic cell function. Two transcript variants encoding distinct isoforms have been identified for this gene.

## Immunogen Information

### Gene ID

170482

### Swiss Prot

Q8WTT0

### Immunogen

Recombinant fusion protein containing a sequence corresponding to amino acids 45-213 of human CD303/BDCA-2 (NP\_569708.1).


### Synonyms

CLEC4C; BDCA2; CD303; CLECSF11; CLECSF7; DLEC; HECL; PRO34150; C-type lectin domain family 4 member C

## Contact

 | 400-999-6126

 | [cn.market@abclonal.com.cn](mailto:cn.market@abclonal.com.cn)

 | [www.abclonal.com.cn](http://www.abclonal.com.cn)

## Product Information

### Source

Rabbit

### Isotype

IgG

### Purification

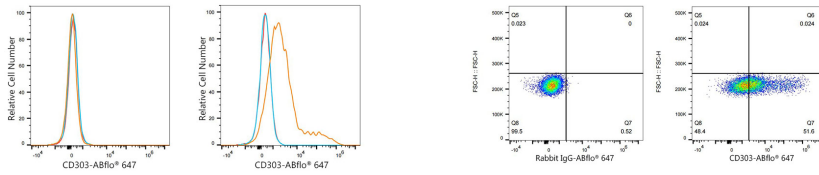
Affinity purification

### Storage

Store at 2-8°C. Avoid freeze.

Buffer: PBS with 0.03% proclin300,0.2% BSA,pH7.3.

## Validation Data



Flow cytometry:  $1 \times 10^6$  293T cells (negative control, Left) and 293T (Transfection) cells (Right) were surface-stained with ABflo® 647 Rabbit anti-Human CD303/BDCA-2 mAb (A24312, 5  $\mu$ l/Test, orange line) or ABflo® 647 Rabbit IgG isotype control (A22070, 5  $\mu$ l/Test, blue line). Non-fluorescently stained cells were used as blank control (red line).

Flow cytometry:  $1 \times 10^6$  293T (Transfection) cells were surface-stained with ABflo® 647 Rabbit IgG isotype control (A22070, 5  $\mu$ l/Test, left) or ABflo® 647 Rabbit anti-Human CD303/BDCA-2 mAb (A24312, 5  $\mu$ l/Test, right).