

ABflo® 594 Rabbit anti-Human CD303/BDCA-2 mAb

Catalog No.: A24313

Basic Information

Observed MW

Refer to figures

Calculated MW

21kDa/25kDa

Category

Primary antibody

Applications

FC

Cross-Reactivity

Human

CloneNo number

ARC61690-ABflo594

Conjugate

ABflo® 594. Ex:588nm. Em:604nm.

Recommended Dilutions

FC 5 µl per 10⁶ cells in
100 µl volume

Background

This gene encodes a member of the C-type lectin/C-type lectin-like domain (CTL/CTLD) superfamily. Members of this family share a common protein fold and have diverse functions, such as cell adhesion, cell-cell signalling, glycoprotein turnover, and roles in inflammation and immune response. The encoded type 2 transmembrane protein may play a role in dendritic cell function. Two transcript variants encoding distinct isoforms have been identified for this gene.

Immunogen Information

Gene ID

170482

Swiss Prot

Q8WTT0

Immunogen

Recombinant fusion protein containing a sequence corresponding to amino acids 45-213 of human CD303/BDCA-2 (NP_569708.1).

Synonyms

CLEC4C; BDCA2; CD303; CLECSF11; CLECSF7; DLEC; HECL; PRO34150; C-type lectin domain family 4 member C

Contact

☎ | 400-999-6126

✉ | cn.market@abclonal.com.cn

🌐 | www.abclonal.com.cn

Product Information

Source

Rabbit

Isotype

IgG

Purification

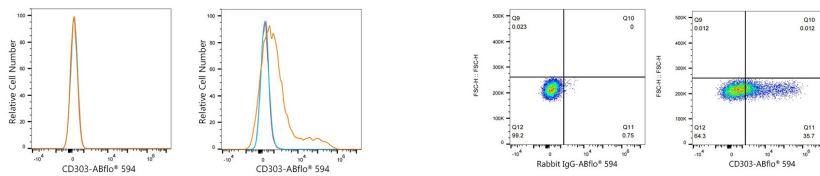
Affinity purification

Storage

Store at 2-8°C. Avoid freeze.

Buffer: PBS with 0.03% proclin300,0.2% BSA,pH7.3.

Validation Data



Flow cytometry: 1×10^6 293T cells (negative control, Left) and 293T (Transfection) cells (Right) were surface-stained with ABflo® 594 Rabbit anti-Human CD303/BDCA-2 mAb (A24313, 5 μ l/Test, orange line) or ABflo® 594 Rabbit IgG isotype control (A23821, 5 μ l/Test, blue line). Non-fluorescently stained cells were used as blank control (red line).

Flow cytometry: 1×10^6 293T (Transfection) cells were surface-stained with ABflo® 594 Rabbit IgG isotype control (A23821, 5 μ l/Test, left) or ABflo® 594 Rabbit anti-Human CD303/BDCA-2 mAb (A24313, 5 μ l/Test, right).