

# ABflo® 647 Rabbit anti-Human IL-17RB mAb

Catalog No.: A24316

## Basic Information

### Observed MW

### Calculated MW

31kDa/55kDa

### Category

Primary antibody

### Applications

FC

### Cross-Reactivity

Human

### CloneNo number

ARC62205-ABflo647

### Conjugate

ABflo® 647. Ex:648nm. Em:664nm.

## Recommended Dilutions

FC 5 µl per 10<sup>6</sup> cells in  
100 µl volume

## Background

The protein encoded by this gene is a cytokine receptor. This receptor specifically binds to IL17B and IL17E, but does not bind to IL17 and IL17C. This receptor has been shown to mediate the activation of NF-kappaB and the production of IL8 induced by IL17E. The expression of the rat counterpart of this gene was found to be significantly up-regulated during intestinal inflammation, which suggested the immunoregulatory activity of this receptor.

## Immunogen Information

### Gene ID

55540

### Swiss Prot

Q9NRM6

### Immunogen

Recombinant fusion protein containing a sequence corresponding to amino acids 18-289 of human IL-17RB (NP\_061195.2).

### Synonyms

IL17RB; CRL4; EVI27; IL17BR; IL17RH1; interleukin-17 receptor B

## Contact

 | 400-999-6126

 | [cn.market@abclonal.com.cn](mailto:cn.market@abclonal.com.cn)

 | [www.abclonal.com.cn](http://www.abclonal.com.cn)

## Product Information

### Source

Rabbit

### Isotype

IgG

### Purification

Affinity purification

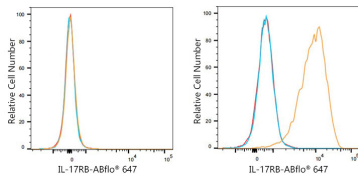
### Storage

Store at 2-8°C. Avoid freeze.

Buffer: PBS with 0.03% proclin300,0.2% BSA,pH7.3.

## Validation Data

---



Flow cytometry:  $1 \times 10^6$  MOLT-4 cells (negative control, Left) and HepG2 cells (Right) were surface-stained with ABflo® 647 Rabbit anti-Human IL-17RB mAb (A24316, 5  $\mu$ l/Test, orange line) or ABflo® 647 Rabbit IgG isotype control (A22070, 5  $\mu$ l/Test, blue line). Non-fluorescently stained cells were used as blank control (red line).