

ABflo® 488 Rabbit anti-Mouse CD271/NGFR mAb

Catalog No.: A24321

Basic Information

Observed MW

Refer to figures

Calculated MW

45kDa

Category

Primary antibody

Applications

FC

Cross-Reactivity

Mouse

CloneNo number

ARC62149-ABflo488

Conjugate

ABflo® 488. Ex:491nm. Em:516nm.

Recommended Dilutions

FC 5 µl per 10⁶ cells in
100 µl volume

Background

Enables death receptor activity; nerve growth factor binding activity; and small GTPase binding activity. Involved in several processes, including cellular glucose homeostasis; circadian regulation of gene expression; and dorsal aorta development. Acts upstream of or within several processes, including hair follicle morphogenesis; nervous system development; and regulation of signal transduction. Located in several cellular components, including cell surface; cell-cell junction; and postsynaptic density. Is expressed in several structures, including alimentary system; genitourinary system; integumental system; nervous system; and sensory organ. Human ortholog(s) of this gene implicated in Alzheimer's disease and mental depression. Orthologous to human NGFR (nerve growth factor receptor).

Immunogen Information

Gene ID

18053

Swiss Prot

Q9Z0W1

Immunogen

Recombinant fusion protein containing a sequence corresponding to amino acids 32-254 of mouse CD271 (NP_150086.2).

Synonyms

p75; LNGFR; p75NTR; p75NGFR; Tnfrsf16

Contact

☎ | 400-999-6126

✉ | cn.market@abclonal.com.cn

🌐 | www.abclonal.com.cn

Product Information

Source

Rabbit

Isotype

IgG

Purification

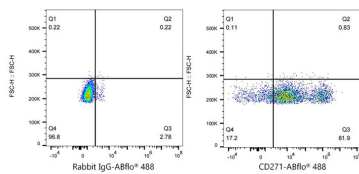
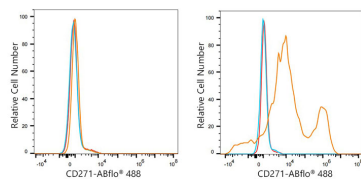
Affinity purification

Storage

Store at 2-8°C. Avoid freeze.

Buffer: PBS with 0.03% proclin300,0.2% BSA,pH7.3.

Validation Data



Flow cytometry: 1×10^6 293F cells (negative control, Left) and 293F (Transfection) cells (Right) were surface-stained with ABflo® 488 Rabbit anti-Mouse CD271/NGFR mAb (A24321,5 μ l/Test, orange line) or ABflo® 488 Rabbit IgG isotype control (A22069,5 μ l/Test, blue line). Non-fluorescently stained cells were used as blank control (red line).

Flow cytometry: 1×10^6 293F (Transfection) cells were surface-stained with ABflo® 488 Rabbit IgG isotype control (A22069,5 μ l/Test, left) or ABflo® 488 Rabbit anti-Mouse CD271/NGFR mAb (A24321,5 μ l/Test, right)