

# ABflo® 594 Rabbit anti-Mouse CD271/NGFR mAb

Catalog No.: A24323

## Basic Information

### Observed MW

Refer to figures

### Calculated MW

45kDa

### Category

Primary antibody

### Applications

FC

### Cross-Reactivity

Mouse

### CloneNo number

ARC62149-ABflo594

### Conjugate

ABflo® 594. Ex:588nm. Em:604nm.

## Recommended Dilutions

FC 5 µl per 10<sup>6</sup> cells in  
100 µl volume

## Background

Enables death receptor activity; nerve growth factor binding activity; and small GTPase binding activity. Involved in several processes, including cellular glucose homeostasis; circadian regulation of gene expression; and dorsal aorta development. Acts upstream of or within several processes, including hair follicle morphogenesis; nervous system development; and regulation of signal transduction. Located in several cellular components, including cell surface; cell-cell junction; and postsynaptic density. Is expressed in several structures, including alimentary system; genitourinary system; integumental system; nervous system; and sensory organ. Human ortholog(s) of this gene implicated in Alzheimer's disease and mental depression. Orthologous to human NGFR (nerve growth factor receptor).

## Immunogen Information

### Gene ID

18053

### Swiss Prot

Q9Z0W1

### Immunogen

Recombinant fusion protein containing a sequence corresponding to amino acids 32-254 of mouse CD271 (NP\_150086.2).

### Synonyms

p75; LNGFR; p75NTR; p75NGFR; Tnfrsf16

## Contact

☎ | 400-999-6126

✉ | [cn.market@abclonal.com.cn](mailto:cn.market@abclonal.com.cn)

🌐 | [www.abclonal.com.cn](http://www.abclonal.com.cn)

## Product Information

### Source

Rabbit

### Isotype

IgG

### Purification

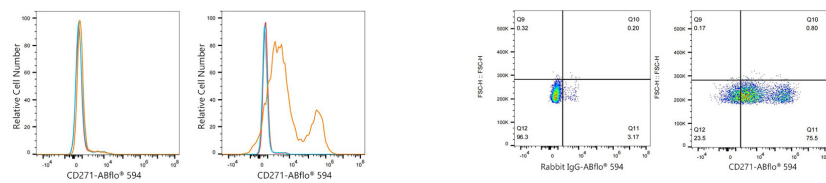
Affinity purification

### Storage

Store at 2-8°C. Avoid freeze.

Buffer: PBS with 0.03% proclin300,0.2% BSA,pH7.3.

## Validation Data



Flow cytometry:  $1 \times 10^6$  293F cells (negative control, Left) and 293F (Transfection) cells (Right) were surface-stained with ABflo® 594 Rabbit anti-Mouse CD271/NGFR mAb (A24323, 5  $\mu$ l/Test, orange line) or ABflo® 594 Rabbit IgG isotype control (A23821, 5  $\mu$ l/Test, blue line). Non-fluorescently stained cells were used as blank control (red line).

Flow cytometry:  $1 \times 10^6$  293F (Transfection) cells were surface-stained with ABflo® 594 Rabbit IgG isotype control (A23821, 5  $\mu$ l/Test, left) or ABflo® 594 Rabbit anti-Mouse CD271/NGFR mAb (A24323, 5  $\mu$ l/Test, right).