

ABflo® 647 Rabbit anti-Human CD6 mAb

Catalog No.: A24325

Basic Information

Observed MW

Calculated MW

58kDa/60kDa/63kDa/64kDa/68kDa/71kDa

Category

Primary antibody

Applications

FC

Cross-Reactivity

Human

CloneNo number

ARC62124-ABflo647

Conjugate

ABflo® 647. Ex:648nm. Em:664nm.

Recommended Dilutions

FC 5 µl per 10⁶ cells in
100 µl volume

Background

This gene encodes a protein found on the outer membrane of T-lymphocytes as well as some other immune cells. The encoded protein contains three scavenger receptor cysteine-rich (SRCR) domains and a binding site for an activated leukocyte cell adhesion molecule. The gene product is important for continuation of T cell activation. This gene may be associated with susceptibility to multiple sclerosis (PMID: 19525953, 21849685). Multiple transcript variants encoding different isoforms have been found for this gene.

Immunogen Information

Gene ID

923

Swiss Prot

P30203

Immunogen

Recombinant fusion protein containing a sequence corresponding to amino acids 18-364 of human CD6 (NP_006716.3).

Synonyms

CD6; TP120; CD6 molecule

Contact

 | 400-999-6126

 | cn.market@abclonal.com.cn

 | www.abclonal.com.cn

Product Information

Source

Rabbit

Isotype

IgG

Purification

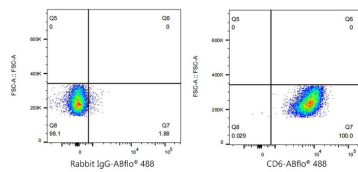
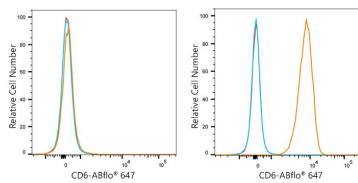
Affinity purification

Storage

Store at 2-8°C. Avoid freeze.

Buffer: PBS with 0.03% proclin300,0.2% BSA,pH7.3.

Validation Data



Flow cytometry: 1×10^6 HeLa cells (negative control, left) and MOLT-4 (right) cells were surface-stained with ABflo® 647 Rabbit anti-Human CD6 mAb(A24325,5 $\mu\text{l}/\text{Test}$, orange line) or ABflo® 647 Rabbit IgG isotype control (A22070,5 $\mu\text{l}/\text{Test}$, blue line). Non-fluorescently stained cells were used as blank control (red line).

Flow cytometry: 1×10^6 MOLT-4 cells were surface-stained with ABflo® 647 Rabbit IgG isotype control (A22070,5 $\mu\text{l}/\text{Test}$, left) or ABflo® 647 Rabbit anti-Human CD6 mAb(A24325,5 $\mu\text{l}/\text{Test}$, right).