

# ABflo® 647 Rabbit anti-Human CD112/Nectin-2 mAb

Catalog No.: A24328

## Basic Information

### Observed MW

Refer to figures

### Calculated MW

51kDa/57kDa

### Category

Primary antibody

### Applications

FC

### Cross-Reactivity

Human

### CloneNo number

ARC62371-ABflo647

### Conjugate

ABflo® 647. Ex:648nm. Em:664nm.

## Recommended Dilutions

**FC** 5 µl per 10<sup>6</sup> cells in  
100 µl volume

## Background

This gene encodes a single-pass type I membrane glycoprotein with two Ig-like C2-type domains and an Ig-like V-type domain. This protein is one of the plasma membrane components of adherens junctions. It also serves as an entry for certain mutant strains of herpes simplex virus and pseudorabies virus, and it is involved in cell to cell spreading of these viruses. Variations in this gene have been associated with differences in the severity of multiple sclerosis. Alternate transcriptional splice variants, encoding different isoforms, have been characterized.

## Immunogen Information

### Gene ID

5819

### Swiss Prot

Q92692

### Immunogen

Recombinant Protein corresponding to a sequence within amino acids 32-158 of human CD112/Nectin-2 (NP\_001036189.1).

### Synonyms

NECTIN2; CD112; HVEB; PRR2; PVRL2; PVRR2; nectin-2

## Contact

 | 400-999-6126

 | [cn.market@abclonal.com.cn](mailto:cn.market@abclonal.com.cn)

 | [www.abclonal.com.cn](http://www.abclonal.com.cn)

## Product Information

### Source

Rabbit

### Isotype

IgG

### Purification

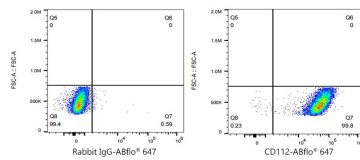
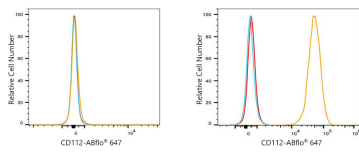
Affinity purification

### Storage

Store at 2-8°C. Avoid freeze.

Buffer: PBS with 0.03% proclin300,0.2% BSA,pH7.3.

## Validation Data



Flow cytometry:  $1 \times 10^6$  MOLT-4 cells (negative control, Left) and MCF-7 cells (Right) were surface-stained with ABflo® 647 Rabbit anti-Human CD112/Nectin-2 mAb (A24328, 5  $\mu$ l/Test, orange line) or ABflo® 647 Rabbit IgG isotype control (A22070, 5  $\mu$ l/Test, blue line). Non-fluorescently stained cells were used as blank control (red line).

Flow cytometry:  $1 \times 10^6$  MCF-7 cells were surface-stained with ABflo® 647 Rabbit IgG isotype control (A22070, 5  $\mu$ l/Test, left) or ABflo® 647 Rabbit anti-Human CD112/Nectin-2 mAb (A24328, 5  $\mu$ l/Test, right).