

Human IgA1 Rabbit mAb

Catalog No.: A24333 **Recombinant**

Basic Information

Observed MW

55kDa

Calculated MW

42kDa

Category

Primary antibody

Applications

ELISA, WB, FC

Cross-Reactivity

Human

CloneNo number

ARC60386

Background

Ig alpha is the major immunoglobulin class in body secretions. It may serve both to defend against local infection and to prevent access of foreign antigens to the general immunologic system. In normal adult serum, the approximate percentage composition of IgA with respect to its subclasses is IgA1:90% and IgA2:10%. In secretory IgA, the subclass proportions may approach 50:50. The clinical significance of the subclasses has yet to be determined.

Recommended Dilutions

WB 1:1000 - 1:5000

FC 1:100 - 1:500

Immunogen Information

Gene ID

3493

Swiss Prot

P01876

Immunogen

Recombinant fusion protein containing a sequence corresponding to amino acids 99-353 of human IgA1.

Synonyms

IgA1; Human IgA1

Contact

☎ | 400-999-6126

✉ | cn.market@abclonal.com.cn

🌐 | www.abclonal.com.cn

Product Information

Source

Rabbit

Isotype

IgG

Purification

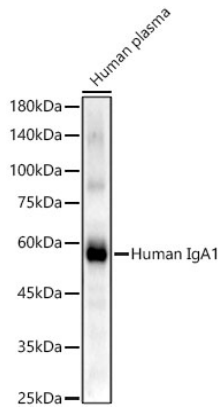
Affinity purification

Storage

Store at -20°C. Avoid freeze / thaw cycles.

Buffer: PBS with 0.05% proclin300, 0.05% BSA, 50% glycerol, pH7.3.

Validation Data



Western blot analysis of lysates from Human plasma using Human IgA1 Rabbit mAb (A24333) at 1:2000 dilution.

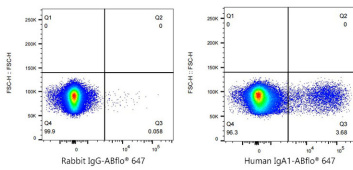
Secondary antibody: HRP Goat Anti-Rabbit IgG (H+L) (AS014) at 1:10000 dilution.

Lysates/proteins: 25ug per lane.

Blocking buffer: 3% nonfat dry milk in TBST.

Detection: ECL Enhanced Kit (RM00021).

Exposure time: 60s.



Flow cytometry: 1X10⁶ Human PBMC were surface-stained with ABflo® 647 Rabbit IgG isotype control (A22070, 2 µg/mL, left) or Human IgA1 Rabbit mAb (A24333, 2 µg/mL, right).