

# Cleaved Gasdermin B/C Terminal Rabbit mAb

Catalog No.: A24342 **Recombinant** **1 Publications**

## Basic Information

### Observed MW

18kDa

### Calculated MW

18kDa/45kDa/46kDa/47kDa

### Category

Primary antibody

### Applications

WB, ELISA

### Cross-Reactivity

Human

### CloneNo number

ARC63400

## Background

This gene encodes a member of the gasdermin-domain containing protein family. Other gasdermin-family genes are implicated in the regulation of apoptosis in epithelial cells, and are linked to cancer. Alternative splicing and the use of alternative promoters results in multiple transcript variants. Additional variants have been described, but they are candidates for nonsense-mediated mRNA decay (NMD) and are unlikely to be protein-coding.

## Recommended Dilutions

**WB** 1:500 - 1:1000

**ELISA** Recommended starting concentration is 1 µg/mL. Please optimize the concentration based on your specific assay requirements.

## Immunogen Information

### Gene ID

55876

### Swiss Prot

Q8TAX9

### Immunogen

Synthetic peptide. This information is considered to be commercially sensitive.

### Synonyms

GSDML; PP4052; GSDMB-1; PRO2521; Cleaved Gasdermin B/C Terminal

## Contact

☎ | 400-999-6126

✉ | [cn.market@abclonal.com.cn](mailto:cn.market@abclonal.com.cn)

🌐 | [www.abclonal.com.cn](http://www.abclonal.com.cn)

## Product Information

### Source

Rabbit

### Isotype

IgG

### Purification

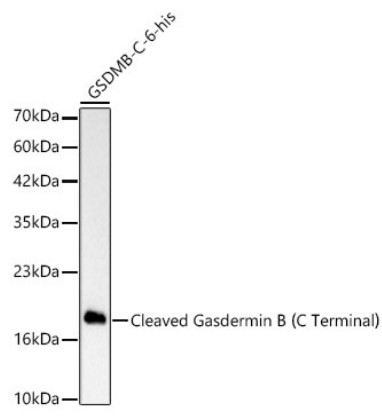
Affinity purification

### Storage

Store at -20°C. Avoid freeze / thaw cycles.

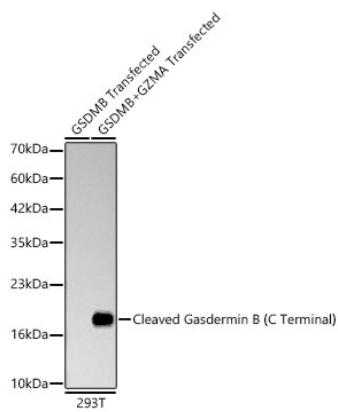
Buffer: PBS containing 50% glycerol and 0.05% BSA, preserved with proclin300 or sodium azide (as specified on the Certificate of Analysis), pH 7.3.

Validation Data



Western blot analysis of lysates from GSDMB-C-6-his protein, using Cleaved Gasdermin B [C Terminal] Rabbit mAb (A24342) at 1:1000 dilution.  
Secondary antibody: HRP-conjugated Goat anti-Rabbit IgG (H+L) (AS014) at 1:10000 dilution.  
Lysates/proteins: 25µg per lane.  
Blocking buffer: 3% nonfat dry milk in TBST.  
Detection: ECL Basic Kit (RM00020).  
Exposure time: 0.3s.

**WB samples for antibody validation are kindly provided by Dr. Feng Shao, NIBS**



Western blot analysis of lysates from 293T GSDMB stable cells and 293T GSDMB stable cells transfected with GZMA using Cleaved Gasdermin B [C Terminal] Rabbit mAb (A24342) at 1:1000 dilution.  
Secondary antibody: HRP-conjugated Goat anti-Rabbit IgG (H+L) (AS014) at 1:10000 dilution.  
Lysates/proteins: 25 µg per lane.  
Blocking buffer: 3% nonfat dry milk in TBST.  
Detection: ECL Basic Kit (RM00020).  
Exposure time: 90s.

**WB samples for antibody validation are kindly provided by Dr. Feng Shao, NIBS**