

CD146 Rabbit mAb

Catalog No.: A24343 **Recombinant**

Basic Information

Observed MW

100kDa,110kDa,120kDa

Calculated MW

71kDa

Category

Primary antibody

Applications

ELISA,WB,IHC-P,FC

Cross-Reactivity

Human, Mouse, Rat

CloneNo number

ARC62356

Background

Predicted to be involved in angiogenesis and positive regulation of cell migration. Predicted to act upstream of or within heterophilic cell-cell adhesion via plasma membrane cell adhesion molecules. Predicted to be located in external side of plasma membrane; extracellular space; and nucleus. Predicted to be active in plasma membrane. Is expressed in several structures, including adipose tissue; genitourinary system; gut; nervous system; and respiratory system. Orthologous to human MCAM (melanoma cell adhesion molecule).

Recommended Dilutions

WB	1:500 - 1:1000
IHC-P	1:50 - 1:200
FC	1:50 - 1:200

Immunogen Information

Gene ID

84004

Swiss Prot

Q8R2Y2

Immunogen

Recombinant Protein corresponding to a sequence within amino acids 24-563 of mouse CD146 (NP_075548.2).

Synonyms

CD146; CD149; Muc18; s-endo; 1-gicerin; s-gicerin

Contact

☎ | 400-999-6126

✉ | cn.market@abclonal.com.cn

🌐 | www.abclonal.com.cn

Product Information

Source

Rabbit

Isotype

IgG

Purification

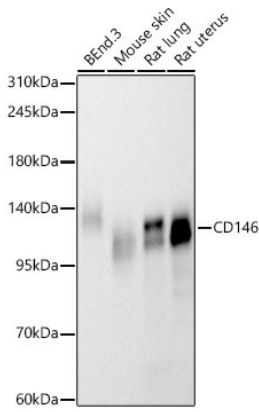
Affinity purification

Storage

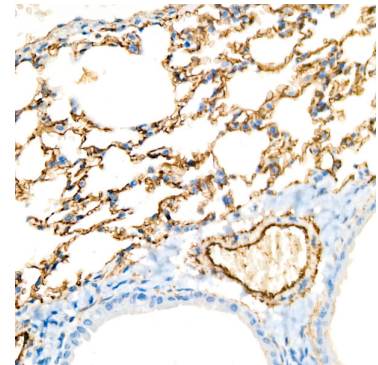
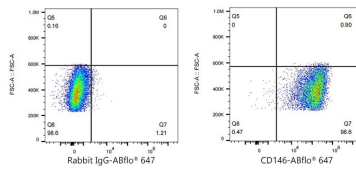
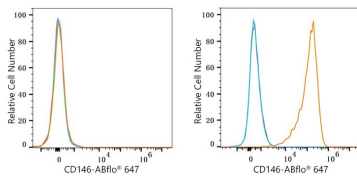
Store at -20°C. Avoid freeze / thaw cycles.

Buffer: PBS with 0.05% proclin300,0.05% BSA,50% glycerol,pH7.3.

Validation Data



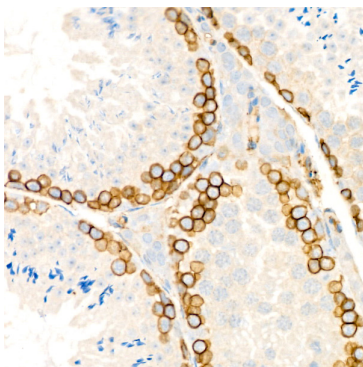
Western blot analysis of various lysates, using CD146 Rabbit mAb (A24343) at 1:1000 dilution. Secondary antibody: HRP Goat Anti-Rabbit IgG (H+L) (AS014) at 1:10000 dilution. Lysates/proteins: 25ug per lane. Blocking buffer: 3% nonfat dry milk in TBST. Detection: ECL Basic Kit (RM00020). Exposure time: 60s.



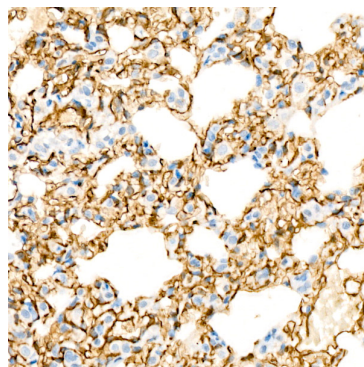
Flow cytometry: 1×10^6 CTLL-2 cells (negative control, Left) and bEnd.3 cells (Right) were surface-stained with CD146 Rabbit mAb (A24343, 2µg/mL, orange line) or ABflo® 647 Rabbit IgG isotype control (A22070, 2µg/mL, blue line), followed by Alexa Fluor® 647 conjugated goat anti-rabbit pAb staining. Non-fluorescently stained cells were used as blank control (red line).

Flow cytometry: 1×10^6 bEnd.3 cells were surface-stained with ABflo® 647 Rabbit IgG isotype control (A22070, 2µg/mL, left) or CD146 Rabbit mAb (A24343, 2µg/mL, right).

Immunohistochemistry analysis of CD146 in paraffin-embedded mouse lung using CD146 Rabbit mAb (A24343) at dilution of 1:200 (40x lens). Perform high pressure antigen retrieval with 10 mM citrate buffer pH 6.0 before commencing with IHC staining protocol.



Immunohistochemistry analysis of CD146 in paraffin-embedded mouse testis using CD146 Rabbit mAb (A24343) at dilution of 1:200 (40x lens). Perform high pressure antigen retrieval with 10 mM citrate buffer pH 6.0 before commencing with IHC staining protocol.



Immunohistochemistry analysis of CD146 in paraffin-embedded rat lung using CD146 Rabbit mAb (A24343) at dilution of 1:200 (40x lens). Perform high pressure antigen retrieval with 10 mM citrate buffer pH 6.0 before commencing with IHC staining protocol.