

Flt3/CD135 Rabbit mAb

Catalog No.: A24344 **Recombinant**

Basic Information

Observed MW

Refer to figures

Calculated MW

113kDa

Category

Primary antibody

Applications

ELISA,IHC-P,FC

Cross-Reactivity

Human, Mouse, Rat

CloneNo number

ARC63041

Background

This gene encodes a class III receptor tyrosine kinase that regulates hematopoiesis. This receptor is activated by binding of the fms-related tyrosine kinase 3 ligand to the extracellular domain, which induces homodimer formation in the plasma membrane leading to autophosphorylation of the receptor. The activated receptor kinase subsequently phosphorylates and activates multiple cytoplasmic effector molecules in pathways involved in apoptosis, proliferation, and differentiation of hematopoietic cells in bone marrow. Mutations that result in the constitutive activation of this receptor result in acute myeloid leukemia and acute lymphoblastic leukemia.

Recommended Dilutions

IHC-P	1:50 - 1:200
FC	1:100 - 1:500

Immunogen Information

Gene ID

2322

Swiss Prot

P36888

Immunogen

Recombinant fusion protein containing a sequence corresponding to amino acids 27-163 of human Flt3/CD135 (NP_004110.2).

Synonyms

FLK2; STK1; CD135; FLK-2; Flt3/CD135

Contact

☎ | 400-999-6126

✉ | cn.market@abclonal.com.cn

🌐 | www.abclonal.com.cn

Product Information

Source

Rabbit

Isotype

IgG

Purification

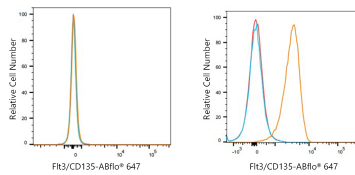
Affinity purification

Storage

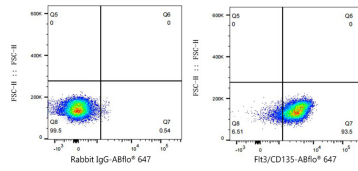
Store at -20°C. Avoid freeze / thaw cycles.

Buffer: PBS with 0.05% proclin300,0.05% BSA,50% glycerol,pH7.3.

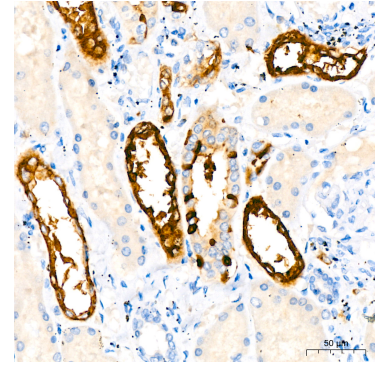
Validation Data



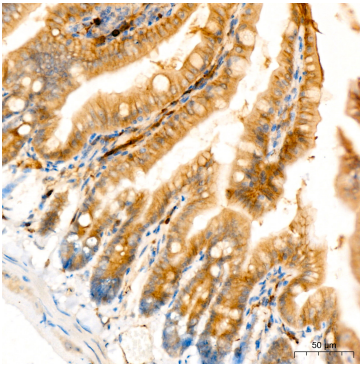
Flow cytometry: 1×10^6 HEK293T cells (negative control, Left) and REH cells (Right) were surface-stained with FIT3/CD135 Rabbit mAb (A24344, 2 μ g/mL, orange line) or ABflo® 647 Rabbit IgG isotype control (A22070, 2 μ g/mL, blue line), followed by Alexa Fluor® 647 conjugated goat anti-rabbit pAb staining. Non-fluorescently stained cells were used as blank control (red line).



Flow cytometry: 1×10^6 REH cells were surface-stained with ABflo® 647 Rabbit IgG isotype control (A22070, 2 μ g/mL, left) or FIT3/CD135 Rabbit mAb (A24344, 2 μ g/mL, right).



Immunohistochemistry analysis of FIT3/CD135 in paraffin-embedded human kidney using FIT3/CD135 Rabbit mAb (A24344) at dilution of 1:200 (40x lens). Perform high pressure antigen retrieval with 10 mM Tris/EDTA buffer pH 9.0 before commencing with IHC staining protocol.



Immunohistochemistry analysis of FIT3/CD135 in paraffin-embedded mouse colon using FIT3/CD135 Rabbit mAb (A24344) at dilution of 1:200 (40x lens). Perform high pressure antigen retrieval with 10 mM Tris/EDTA buffer pH 9.0 before commencing with IHC staining protocol.