

ABflo® 647 Rabbit anti-FITC/5-FAM/6-FAM mAb

Catalog No.: A24356

Basic Information

Observed MW

Calculated MW

Category

Primary antibody

Applications

FC

Cross-Reactivity

Species independent

CloneNo number

ARC51071-IgM-01-ABf647

Conjugate

ABflo® 647. Ex:648nm. Em:664nm.

Background

FITC (fluorescein isothiocyanate) is a fluorochrome dye that absorbs ultraviolet or blue light causing molecules to become excited and emit a visible yellow-green light. This emission ceases upon removal of the light causing the excitation. Fluorochrome labeling provides rapid, accurate localization of antigen-antibody interaction when one of the reactants is part of a cell, tissue or other biological structure. FITC is a commonly used marker for antibodies in immunofluorescent techniques since the conjugation of FITC to proteins is relatively easy and does not, in general, destroy the biological activity of the labeled protein. FITC is widely used as a hapten to label different proteins.

Recommended Dilutions

FC 5 µl per 10⁶ cells in
100 µl volume

Immunogen Information

Gene ID

Swiss Prot

Immunogen

Chemical/ Small Molecule corresponding to FITC/5-FAM/6-FAM.

Synonyms

FITC

Contact

☎ | 400-999-6126

✉ | cn.market@abclonal.com.cn

🌐 | www.abclonal.com.cn

Product Information

Source

Rabbit

Isotype

IgM

Purification

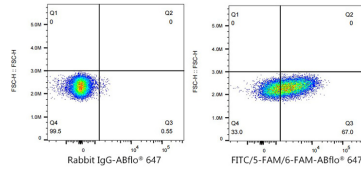
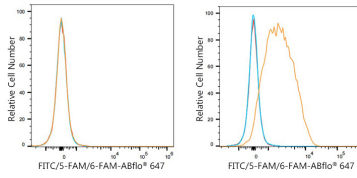
Affinity purification

Storage

Store at 2-8°C. Avoid freeze.

Buffer: PBS with 0.03% proclin300,0.2% BSA,pH7.3.

Validation Data



Flow cytometry: 1×10^6 HT-29 cells (negative control, Left) and Raji cells (Right) were surface-stained with Mouse anti-Human CD86 mAb (5 μ l/Test, orange line) or ABflo® 647 Mouse IgG1 isotype control (5 μ l/Test, blue line), then stained with ABflo® 647 Rabbit anti-FITC/5-FAM/6-FAM mAb (A24356, 5 μ l/Test). Non-fluorescently stained cells were used as blank control (red line).

Flow cytometry: 1×10^6 Raji cells were surface-stained with ABflo® 647 Mouse IgG1 isotype control (5 μ l/Test, left) or Mouse anti-Human CD86 mAb (5 μ l/Test, right) then stained with ABflo® 647 Rabbit anti-FITC/5-FAM/6-FAM mAb (A24356, 5 μ l/Test).