

# ABflo® 488 Rabbit anti-Human Siglec-8 mAb

Catalog No.: A24358

## Basic Information

### Observed MW

### Calculated MW

44kDa/46kDa/54kDa

### Category

Primary antibody

### Applications

FC

### Cross-Reactivity

Human

### CloneNo number

ARC52422-IgM-01-ABf488

### Conjugate

ABflo® 488. Ex:491nm. Em:516nm.

## Recommended Dilutions

FC 5 µl per 10<sup>6</sup> cells in  
100 µl volume

## Background

Sialic acid-binding immunoglobulin (Ig)-like lectins, or SIGLECs (e.g., CD33 (MIM 159590)), are a family of type 1 transmembrane proteins each having a unique expression pattern, mostly in hemopoietic cells. SIGLEC8 is a member of the CD33-like subgroup of SIGLECs, which are localized to 19q13.3-q13.4 and have 2 conserved cytoplasmic tyrosine-based motifs: an immunoreceptor tyrosine-based inhibitory motif, or ITIM (see MIM 604964), and a motif homologous to one identified in signaling lymphocyte activation molecule (SLAM; MIM 603492) that mediates an association with SLAM-associated protein (SAP; MIM 300490) (summarized by Foussias et al., 2000 [PubMed 11095983]).[supplied by OMIM, May 2010]

## Immunogen Information

### Gene ID

27181

### Swiss Prot

Q9NYZ4

### Immunogen

Recombinant fusion protein containing a sequence corresponding to amino acids 17-363 of human Siglec-8(NP\_055257.2)

### Synonyms

SIGLEC8; SAF2; SIGLEC-8; SIGLEC8L; sialic acid-binding Ig-like lectin 8

## Contact

☎ | 400-999-6126

✉ | [cn.market@abclonal.com.cn](mailto:cn.market@abclonal.com.cn)

🌐 | [www.abclonal.com.cn](http://www.abclonal.com.cn)

## Product Information

### Source

Rabbit

### Isotype

IgM

### Purification

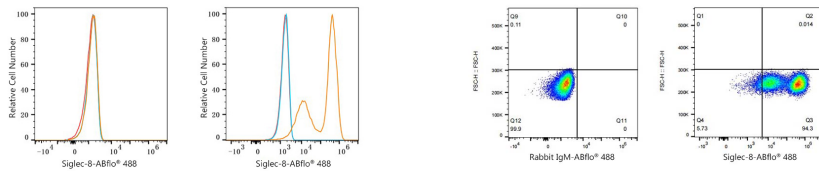
Affinity purification

### Storage

Store at 2-8°C. Avoid freeze.

Buffer: PBS with 0.03% proclin300,0.2% BSA,pH7.3.

## Validation Data



Flow cytometry:  $1 \times 10^6$  293F cells (negative control, Left) and 293F (Transfection, right) cells were surface-stained with ABflo® 488 Rabbit anti-Human Siglec-8 mAb(A24358, 5  $\mu$ l/Test, orange line) or ABflo® 488 Rabbit IgM isotype control (5  $\mu$ l/Test, blue line). Non-fluorescently stained cells were used as blank control (red line).

Flow cytometry:  $1 \times 10^6$  293F (Transfection) cells were surface-stained with ABflo® 488 Rabbit IgM isotype control (5  $\mu$ l/Test, left) or ABflo® 488 Rabbit anti-Human Siglec-8 mAb(A24358, 5  $\mu$ l/Test, right).