

# ABflo® 647 Rabbit anti-Mouse LAMP1/CD107a mAb

Catalog No.: A24363

## Basic Information

### Observed MW

### Calculated MW

43kDa

### Category

Primary antibody

### Applications

IF/ICC,FC

### Cross-Reactivity

Mouse

### CloneNo number

ARC61633-ABflo647

### Conjugate

ABflo® 647. Ex:648nm. Em:664nm.

## Recommended Dilutions

IF/ICC 1:50 - 1:200

FC 5 µl per 10<sup>6</sup> cells in  
100 µl volume

## Background

Enables protein domain specific binding activity. Involved in protein stabilization. Located in several cellular components, including cytoplasmic vesicle; sarcolemma; and vacuole. Is expressed in several structures, including 1-cell stage embryo; central nervous system; craniocervical region bone; extraembryonic component; and gut. Orthologous to human LAMP1 (lysosomal associated membrane protein 1).

## Immunogen Information

### Gene ID

16783

### Swiss Prot

P11438

### Immunogen

Recombinant fusion protein containing a sequence corresponding to amino acids 208-363 of mouse LAMP1/CD107a[[NP\\_034814.2](#)].

### Synonyms

P2B; Perk; LGP-A; CD107a; Lamp-1; LGP-120

## Contact

☎ | 400-999-6126

✉ | [cn.market@abclonal.com.cn](mailto:cn.market@abclonal.com.cn)

🌐 | [www.abclonal.com.cn](http://www.abclonal.com.cn)

## Product Information

### Source

Rabbit

### Isotype

IgG

### Purification

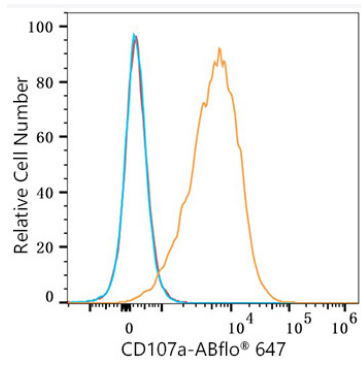
Affinity purification

### Storage

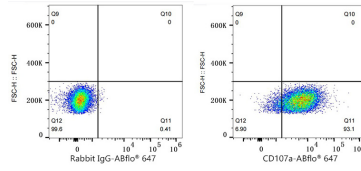
Store at 2-8°C. Avoid freeze.

Buffer: PBS with 0.03% proclin300,0.2% BSA,pH7.3.

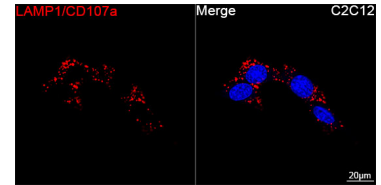
## Validation Data



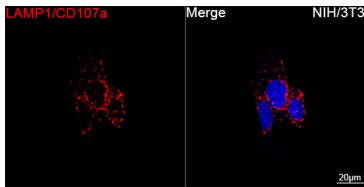
Flow cytometry:  $1 \times 10^6$  Raw264.7 cells were surface-stained with ABflo® 647 Rabbit anti-Mouse LAMP1/CD107a mAb (A24363, 5  $\mu$ l/Test, orange line) or ABflo® 647 Rabbit IgG isotype control (A22070, 5  $\mu$ l/Test, blue line). Non-fluorescently stained Raw264.7 cells were used as blank control (red line).



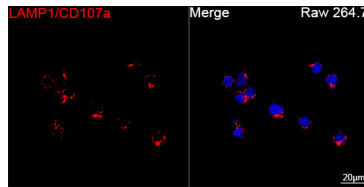
Flow cytometry:  $1 \times 10^6$  Raw264.7 cells were surface-stained with ABflo® 647 Rabbit IgG isotype control (A22070, 5  $\mu$ l/Test, left) or ABflo® 647 Rabbit anti-Mouse LAMP1/CD107a mAb (A24363, 5  $\mu$ l/Test, right).



Confocal imaging of C2C12 cells using ABflo® 647 Rabbit anti-Mouse LAMP1/CD107a mAb (A24363, dilution 1:50). DAPI was used for nuclear staining (Blue). Objective: 100x.



Confocal imaging of NIH/3T3 cells using ABflo® 647 Rabbit anti-Mouse LAMP1/CD107a mAb (A24363, dilution 1:50). DAPI was used for nuclear staining (Blue). Objective: 100x.



Confocal imaging of RAW 264.7 cells using ABflo® 647 Rabbit anti-Mouse LAMP1/CD107a mAb (A24363, dilution 1:50). DAPI was used for nuclear staining (Blue). Objective: 100x.