

ABflo® 594 Rabbit anti-Mouse LAMP1/CD107a mAb

Catalog No.: A24364

Basic Information

Observed MW

Calculated MW

43kDa

Category

Primary antibody

Applications

IF/ICC,FC

Cross-Reactivity

Mouse

CloneNo number

ARC61633-ABflo594

Conjugate

ABflo® 594. Ex:588nm. Em:604nm.

Recommended Dilutions

IF/ICC 1:50 - 1:200

FC 5 µl per 10⁶ cells in
100 µl volume

Background

Enables protein domain specific binding activity. Involved in protein stabilization. Located in several cellular components, including cytoplasmic vesicle; sarcolemma; and vacuole. Is expressed in several structures, including 1-cell stage embryo; central nervous system; craniocervical region bone; extraembryonic component; and gut. Orthologous to human LAMP1 (lysosomal associated membrane protein 1).

Immunogen Information

Gene ID

16783

Swiss Prot

P11438

Immunogen

Recombinant fusion protein containing a sequence corresponding to amino acids 208-363 of mouse LAMP1/CD107a[[NP_034814.2](#)].

Synonyms

P2B; Perk; LGP-A; CD107a; Lamp-1; LGP-120

Contact

☎ | 400-999-6126

✉ | cn.market@abclonal.com.cn

🌐 | www.abclonal.com.cn

Product Information

Source

Rabbit

Isotype

IgG

Purification

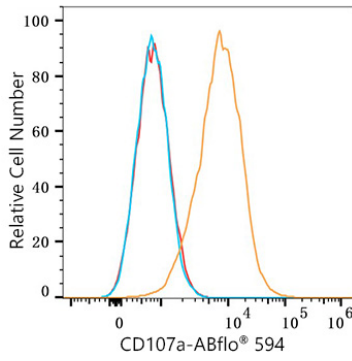
Affinity purification

Storage

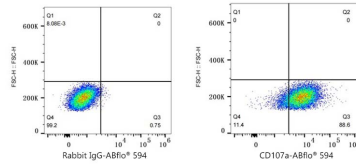
Store at 2-8°C. Avoid freeze.

Buffer: PBS with 0.03% proclin300,0.2% BSA,pH7.3.

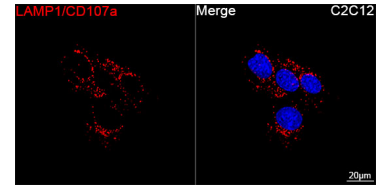
Validation Data



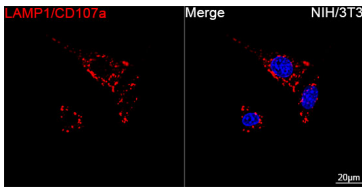
Flow cytometry: 1×10^6 Raw264.7 cells were surface-stained with ABflo® 594 Rabbit anti-Mouse LAMP1/CD107a mAb (A24364, 5 μ l/Test, orange line) or ABflo® 594 Rabbit IgG isotype control (A23821, 5 μ l/Test, blue line). Non-fluorescently stained Raw264.7 cells were used as blank control (red line).



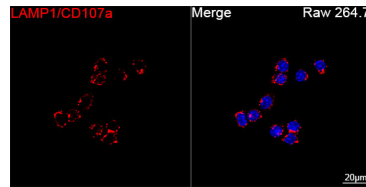
Flow cytometry: 1×10^6 Raw264.7 cells were surface-stained with ABflo® 594 Rabbit IgG isotype control (A23821, 5 μ l/Test, left) or ABflo® 594 Rabbit anti-Mouse LAMP1/CD107a mAb (A24364, 5 μ l/Test, right).



Confocal imaging of C2C12 cells using ABflo® 594 Rabbit anti-Mouse LAMP1/CD107a mAb (A24364, dilution 1:50). DAPI was used for nuclear staining (Blue). Objective: 100x.



Confocal imaging of NIH/3T3 cells using ABflo® 594 Rabbit anti-Mouse LAMP1/CD107a mAb (A24364, dilution 1:50). DAPI was used for nuclear staining (Blue). Objective: 100x.



Confocal imaging of RAW 264.7 cells using ABflo® 594 Rabbit anti-Mouse LAMP1/CD107a mAb (A24364, dilution 1:50). DAPI was used for nuclear staining (Blue). Objective: 100x.