

ABflo® 647 Rabbit anti-Human KIR2DL4/CD158d mAb

Catalog No.: A24368

Basic Information

Observed MW

Calculated MW

24kDa/33kDa/35kDa/37kDa/39kDa/41kDa

Category

Primary antibody

Applications

FC

Cross-Reactivity

Human

CloneNo number

ARC62160-ABflo647

Conjugate

ABflo® 647. Ex:648nm. Em:664nm.

Recommended Dilutions

FC 5 µl per 10⁶ cells in
100 µl volume

Background

Killer cell immunoglobulin-like receptors (KIRs) are transmembrane glycoproteins expressed by natural killer cells and subsets of T cells. The KIR genes are polymorphic and highly homologous and they are found in a cluster on chromosome 19q13.4 within the 1 Mb leukocyte receptor complex (LRC). The gene content of the KIR gene cluster varies among haplotypes, although several 'framework' genes are found in all haplotypes (KIR3DL3, KIR3DP1, KIR3DL4, KIR3DL2). The KIR proteins are classified by the number of extracellular immunoglobulin domains (2D or 3D) and by whether they have a long (L) or short (S) cytoplasmic domain. KIR proteins with the long cytoplasmic domain transduce inhibitory signals upon ligand binding via an immune tyrosine-based inhibitory motif (ITIM), while KIR proteins with the short cytoplasmic domain lack the ITIM motif and instead associate with the TYRO protein tyrosine kinase binding protein to transduce activating signals. The ligands for several KIR proteins are subsets of HLA class I molecules; thus, KIR proteins are thought to play an important role in regulation of the immune response. This gene is one of the 'framework' loci that is present on all haplotypes. Alternate alleles of this gene are represented on multiple alternate reference loci (ALT_REF_LOCs). Alternative splicing results in multiple transcript variants, some of which may not be annotated on the primary reference assembly.

Immunogen Information

Gene ID

3805

Swiss Prot

Q99706

Immunogen

Recombinant fusion protein containing a sequence corresponding to amino acids 24-242 of human KIR2DL4/CD158d(NP_002246.5).

Synonyms

KIR2DL4; CD158D; G9P; KIR-103AS; KIR-2DL4; KIR103; KIR103AS; killer cell immunoglobulin-like receptor 2DL4

Contact

☎ | 400-999-6126

✉ | cn.market@abclonal.com.cn

🌐 | www.abclonal.com.cn

Product Information

Source

Rabbit

Isotype

IgG

Purification

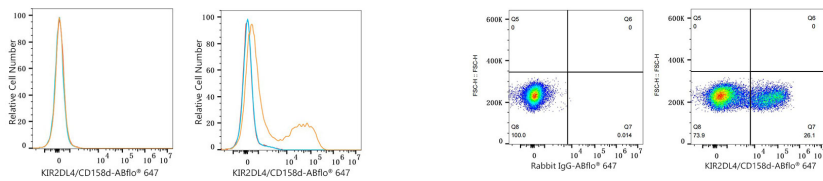
Affinity purification

Storage

Store at 2-8°C. Avoid freeze.

Buffer: PBS with 0.03% proclin300,0.2% BSA,pH7.3.

Validation Data



Flow cytometry: 1×10^6 293F cells (negative control, left) and 293F (Transfection, right) cells were surface-stained with ABflo® 647 Rabbit anti-Human KIR2DL4/CD158d mAb (A24368, 5 μ l/Test, orange line) or ABflo® 647 Rabbit IgG isotype control (A22070, 5 μ l/Test, blue line). Non-fluorescently stained cells were used as blank control (red line).

Flow cytometry: 1×10^6 293F (Transfection) cells were surface-stained with ABflo® 647 Rabbit IgG isotype control (A22070, 5 μ l/Test, left) or ABflo® 647 Rabbit anti-Human KIR2DL4/CD158d mAb (A24368, 5 μ l/Test, right).