

# ABflo® 647 Rabbit anti-Mouse CD47 mAb

Catalog No.: A24378

## Basic Information

### Observed MW

### Calculated MW

33KDa/35KDa

### Category

Primary antibody

### Applications

FC

### Cross-Reactivity

Mouse

### CloneNo number

ARC62629-ABflo647

### Conjugate

ABflo® 647. Ex:648nm. Em:664nm.

## Recommended Dilutions

FC 5 µl per 10<sup>6</sup> cells in  
100 µl volume

## Background

Predicted to enable protein binding activity involved in heterotypic cell-cell adhesion and thrombospondin receptor activity. Involved in regulation of nitric oxide biosynthetic process. Acts upstream of or within several processes, including monocyte aggregation; opsonization; and positive regulation of phagocytosis. Located in extracellular exosome. Is integral component of plasma membrane. Is expressed in several structures, including alimentary system; central nervous system; genitourinary system; hemolymphoid system gland; and liver and biliary system. Orthologous to human CD47 (CD47 molecule).

## Immunogen Information

### Gene ID

16423

### Swiss Prot

Q61735

### Immunogen

Recombinant fusion protein containing a sequence corresponding to amino acids 19-135 of mouse CD47 (NP\_034711.1).

### Synonyms

IAP; Itgp; 9130415E20Rik; B430305P08Rik

## Contact

☎ | 400-999-6126

✉ | [cn.market@abclonal.com.cn](mailto:cn.market@abclonal.com.cn)

🌐 | [www.abclonal.com.cn](http://www.abclonal.com.cn)

## Product Information

### Source

Rabbit

### Isotype

IgG

### Purification

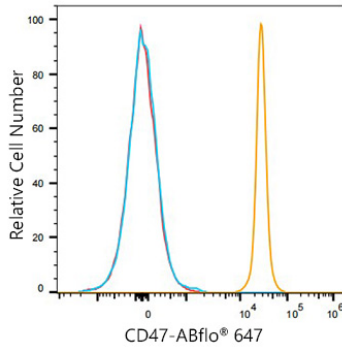
Affinity purification

### Storage

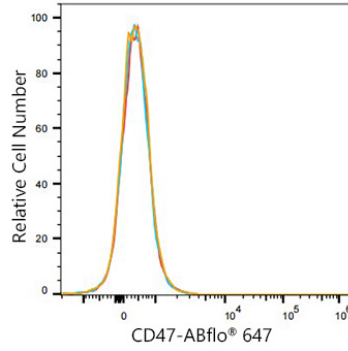
Store at 2-8°C. Avoid freeze.

Buffer: PBS with 0.03% proclin300,0.2% BSA,pH7.3.

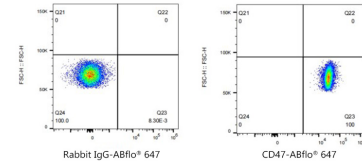
## Validation Data



Flow cytometry:  $1 \times 10^6$  C57 BL/6 mouse Splenocytes were surface-stained with ABflo® 647 Rabbit anti-Mouse CD47 mAb (A24378, 5  $\mu$ l/Test, orange line) or ABflo® 647 Rabbit IgG isotype control (A22070, 5  $\mu$ l/Test, blue line). Non-fluorescently stained C57 BL/6 mouse Splenocytes were used as blank control (red line).



Flow cytometry:  $1 \times 10^6$  Hep G2 cells (negative control) were surface-stained with ABflo® 647 Rabbit anti-Mouse CD47 mAb (A24378, 5  $\mu$ l/Test, orange line) or ABflo® 647 Rabbit IgG isotype control (A22070, 5  $\mu$ l/Test, blue line). Non-fluorescently stained Hep G2 cells were used as blank control (red line).



Flow cytometry:  $1 \times 10^6$  C57 BL/6 mouse Splenocytes were surface-stained with ABflo® 647 Rabbit IgG isotype control (A22070, 5  $\mu$ l/Test, left) or ABflo® 647 Rabbit anti-Mouse CD47 mAb (A24378, 5  $\mu$ l/Test, right).