

ABflo® 594 Rabbit anti-Mouse CD47 mAb

Catalog No.: A24379

Basic Information

Observed MW

Calculated MW
33KDa/35KDa

Category
Primary antibody

Applications
FC

Cross-Reactivity
Mouse

CloneNo number
ARC62629

Conjugate
ABflo® 594. Ex:588nm. Em:604nm.

Background

Predicted to enable protein binding activity involved in heterotypic cell-cell adhesion and thrombospondin receptor activity. Involved in regulation of nitric oxide biosynthetic process. Acts upstream of or within several processes, including monocyte aggregation; opsonization; and positive regulation of phagocytosis. Located in extracellular exosome. Is integral component of plasma membrane. Is expressed in several structures, including alimentary system; central nervous system; genitourinary system; hemolymphoid system gland; and liver and biliary system. Orthologous to human CD47 (CD47 molecule).

Recommended Dilutions

FC 5 µl per 10⁶ cells in
100 µl volume

Immunogen Information

Gene ID	Swiss Prot
16423	Q61735

Immunogen

Recombinant protein (or fragment). This information is considered to be commercially sensitive.

Synonyms

IAP; Itgp; 9130415E20Rik; B430305P08Rik

Contact

☎	400-999-6126
✉	cn.market@abclonal.com.cn
🌐	www.abclonal.com.cn

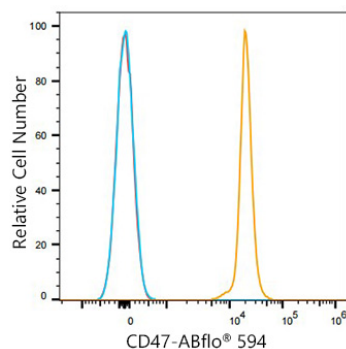
Product Information

Source	Isotype	Purification
Rabbit	IgG	Affinity purification

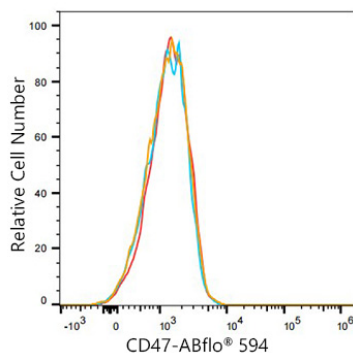
Storage

Store at 2-8°C. Avoid freeze.
Buffer: PBS containing 0.2% BSA, preserved with proclin300 or sodium azide (as specified on the Certificate of Analysis), pH 7.3.

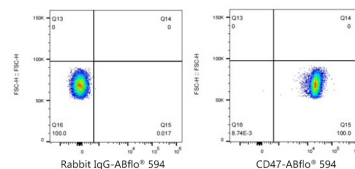
Validation Data



Flow cytometry: 1×10^6 C57 BL/6 mouse Splenocytes were surface-stained with ABflo® 594 Rabbit anti-Mouse CD47 mAb (A24379, 5 μ l/Test, orange line) or ABflo® 594 Rabbit IgG isotype control (A23821, 5 μ l/Test, blue line). Non-fluorescently stained C57 BL/6 mouse Splenocytes were used as blank control (red line).



Flow cytometry: 1×10^6 Hep G2 cells (negative control) were surface-stained with ABflo® 594 Rabbit anti-Mouse CD47 mAb (A24379, 5 μ l/Test, orange line) or ABflo® 594 Rabbit IgG isotype control (A23821, 5 μ l/Test, blue line). Non-fluorescently stained Hep G2 cells were used as blank control (red line).



Flow cytometry: 1×10^6 C57 BL/6 mouse Splenocytes were surface-stained with ABflo® 594 Rabbit IgG isotype control (A23821, 5 μ l/Test, left) or ABflo® 594 Rabbit anti-Mouse CD47 mAb (A24379, 5 μ l/Test, right).