

CD47 Rabbit mAb

Catalog No.: A24380 **Recombinant**

Basic Information

Observed MW

Calculated MW
33KDa/35KDa

Category
Primary antibody

Applications
ELISA,FC

Cross-Reactivity
Mouse

CloneNo number
ARC62629

Background

Predicted to enable protein binding activity involved in heterotypic cell-cell adhesion and thrombospondin receptor activity. Involved in regulation of nitric oxide biosynthetic process. Acts upstream of or within several processes, including monocyte aggregation; opsonization; and positive regulation of phagocytosis. Located in extracellular exosome. Is integral component of plasma membrane. Is expressed in several structures, including alimentary system; central nervous system; genitourinary system; hemolymphoid system gland; and liver and biliary system. Orthologous to human CD47 (CD47 molecule).

Recommended Dilutions

FC 1:50 - 1:200

Immunogen Information

Gene ID 16423	Swiss Prot Q61735
-------------------------	-----------------------------

Immunogen

Recombinant fusion protein containing a sequence corresponding to amino acids 19-135 of mouse CD47 (NP_034711.1).

Synonyms

IAP; Itgp; 9130415E20Rik; B430305P08Rik; CD47

Contact

☎		400-999-6126
✉		cn.market@abclonal.com.cn
🌐		www.abclonal.com.cn

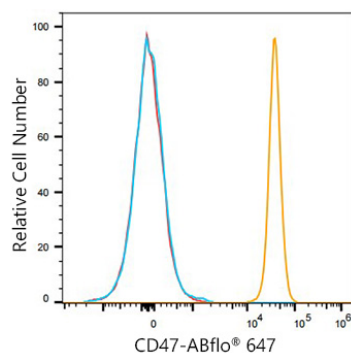
Product Information

Source Rabbit	Isotype IgG	Purification Affinity purification
-------------------------	-----------------------	--

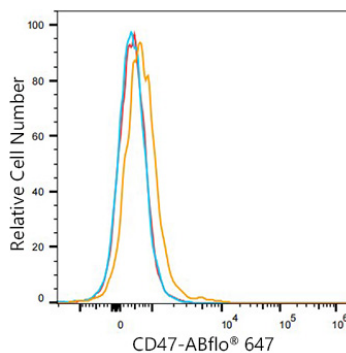
Storage

Store at -20°C. Avoid freeze / thaw cycles.
Buffer: PBS with 0.05% proclin300,0.05% BSA,50% glycerol,pH7.3.

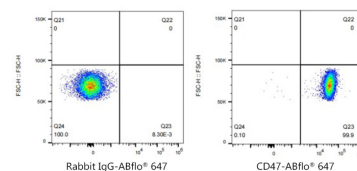
Validation Data



Flow cytometry: 1×10^6 C57 BL/6 mouse Splenocytes were surface-stained with CD47 Rabbit mAb (A24380, 2 $\mu\text{g/mL}$, orange line) or ABflo® 647 Rabbit IgG isotype control (A22070, 2 $\mu\text{g/mL}$, blue line), followed by Alexa Fluor®647 conjugated goat anti-rabbit pAb (1:200 dilution) staining. Non-fluorescently stained C57 BL/6 mouse Splenocytes were used as blank control (red line).



Flow cytometry: 1×10^6 Hep G2 cells (negative control) were surface-stained with CD47 Rabbit mAb (A24380, 2 $\mu\text{g/mL}$, orange line) or ABflo® 647 Rabbit IgG isotype control (A22070, 2 $\mu\text{g/mL}$, blue line), followed by Alexa Fluor®647 conjugated goat anti-rabbit pAb (1:200 dilution) staining. Non-fluorescently stained Hep G2 cells were used as blank control (red line).



Flow cytometry: 1×10^6 C57 BL/6 mouse Splenocytes were surface-stained with ABflo® 647 Rabbit IgG isotype control (A22070, 2 $\mu\text{g/mL}$, left) or CD47 Rabbit mAb (A24380, 2 $\mu\text{g/mL}$, right).