

# CD68 Rabbit PolymAb®

Catalog No.: A24386-PM

## Basic Information

### Observed MW

70-130kDa

### Calculated MW

70-130kDa

### Category

Primary antibody

### Applications

WB, IHC-P, IF/ICC, ELISA

### Cross-Reactivity

Human, Mouse

## Background

Involved in several processes, including cellular response to lipopolysaccharide; cellular response to oxidised low-density lipoprotein particle stimulus; and negative regulation of dendritic cell antigen processing and presentation. Acts upstream of or within aging and cellular response to organic substance. Located in lysosome and plasma membrane. Is expressed in several structures, including central nervous system; embryo mesenchyme; heart blood vessel; liver; and spleen. Orthologous to human CD68 (CD68 molecule).

## Recommended Dilutions

**WB** 1:500 - 1:2000

**IHC-P** 1:5000 - 1:14000

**IF/ICC** 1:50 - 1:200

**ELISA** Recommended starting concentration is 1 µg/mL. Please optimize the concentration based on your specific assay requirements.

## Immunogen Information

### Gene ID

968/ 12514

### Swiss Prot

P34810/P31996

### Immunogen

Recombinant protein of human/mouse CD68.

### Synonyms

Lamp4; gp110; Scard1

## Contact

☎ | 400-999-6126

✉ | [cn.market@abclonal.com.cn](mailto:cn.market@abclonal.com.cn)

🌐 | [www.abclonal.com.cn](http://www.abclonal.com.cn)

## Product Information

### Source

Rabbit

### Isotype

IgG

### Purification

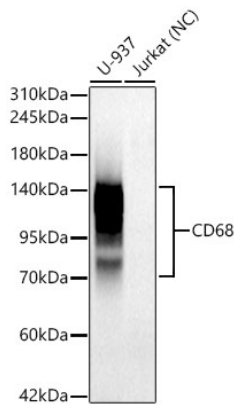
Affinity purification

### Storage

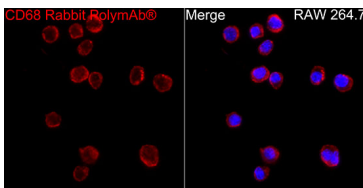
Store at -20°C. Avoid freeze / thaw cycles.

Buffer: PBS with 0.05% proclin300, 0.05% BSA, 50% glycerol, pH7.3.

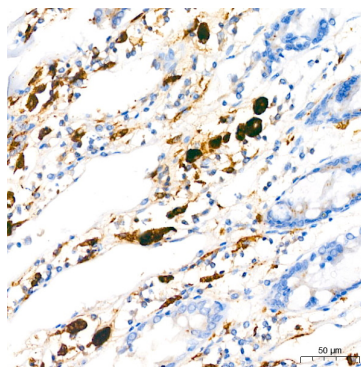
## Validation Data



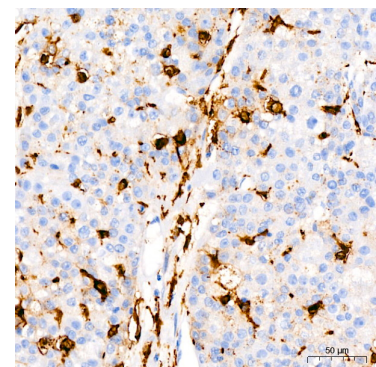
Western blot analysis of various lysates, using CD68 Rabbit PolymAb® (A24386-PM) at 1:1000 dilution. Secondary antibody: HRP-conjugated Goat anti-Rabbit IgG (H+L) (AS014) at 1:10000 dilution. Lysates/proteins: 25µg per lane. Blocking buffer: 3% nonfat dry milk in TBST. Detection: ECL Basic Kit (RM00020). Negative control (NC): Jurkat. Exposure time: 10s.



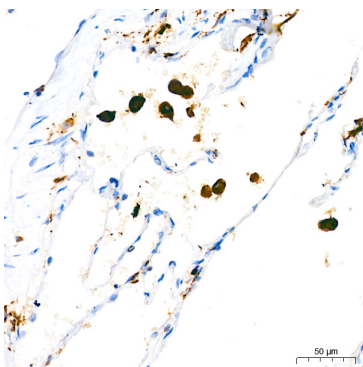
Immunofluorescence analysis of RAW264.7 cells using CD68 Rabbit PolymAb® (A24386-PM) at dilution of 1:200 (40x lens). Secondary antibody: Cy3-conjugated Goat anti-Rabbit IgG (H+L) (AS007) at 1:500 dilution. Blue: DAPI for nuclear staining.



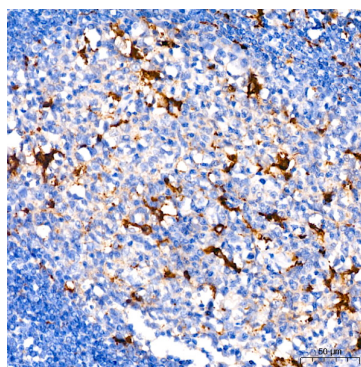
Immunohistochemistry analysis of paraffin-embedded Human colon using CD68 Rabbit PolymAb® (A24386-PM) at dilution of 1:10000 (40x lens). High pressure antigen retrieval performed with 0.01M Citrate Bufferr (pH 6.0) prior to IHC staining.



Immunohistochemistry analysis of paraffin-embedded Human liver using CD68 Rabbit PolymAb® (A24386-PM) at dilution of 1:10000 (40x lens). High pressure antigen retrieval performed with 0.01M Citrate Bufferr (pH 6.0) prior to IHC staining.



Immunohistochemistry analysis of paraffin-embedded Human lung using CD68 Rabbit PolymAb® (A24386-PM) at dilution of 1:10000 (40x lens). High pressure antigen retrieval performed with 0.01M Citrate Bufferr (pH 6.0) prior to IHC staining.



Immunohistochemistry analysis of paraffin-embedded Human tonsil using CD68 Rabbit PolymAb® (A24386-PM) at dilution of 1:10000 (40x lens). High pressure antigen retrieval performed with 0.01M Citrate Bufferr (pH 6.0) prior to IHC staining.