

# Renin Rabbit mAb

Catalog No.: A24393 **Recombinant**

## Basic Information

**Observed MW**

42kDa

**Calculated MW**

45kDa

**Category**

Primary antibody

**Applications**

WB,IF/ICC,ELISA

**Cross-Reactivity**

Human, Mouse, Rat

**CloneNo number**

ARC63715

## Background

This gene encodes renin, an aspartic protease that is secreted by the kidneys. Renin is a part of the renin-angiotensin-aldosterone system involved in regulation of blood pressure, and electrolyte balance. This enzyme catalyzes the first step in the activation pathway of angiotensinogen by cleaving angiotensinogen to form angiotensin I, which is then converted to angiotensin II by angiotensin I converting enzyme. This cascade can result in aldosterone release, narrowing of blood vessels, and increase in blood pressure as angiotensin II is a vasoconstrictive peptide. Transcript variants that encode different protein isoforms and that arise from alternative splicing and the use of alternative promoters have been described, but their full-length nature has not been determined. Mutations in this gene have been shown to cause hyperuricemic nephropathy familial juvenile 2, familial hyperproreninemia, and renal tubular dysgenesis.

## Recommended Dilutions

**WB** 1:1000 - 1:2000**IF/ICC** 1:200 - 1:800**ELISA** Recommended starting concentration is 1 µg/mL. Please optimize the concentration based on your specific assay requirements.

## Immunogen Information

**Gene ID**

5972

**Swiss Prot**

P00797

**Immunogen**

Recombinant Protein corresponding to a sequence within amino acids 250-406AA of human Renin (NP\_000528.1).

**Synonyms**

RTD; HNFJ2; ADTKD4; Renin

## Contact

 | 400-999-6126 | [cn.market@abclonal.com.cn](mailto:cn.market@abclonal.com.cn) | [www.abclonal.com.cn](http://www.abclonal.com.cn)

## Product Information

**Source**

Rabbit

**Isotype**

IgG

**Purification**

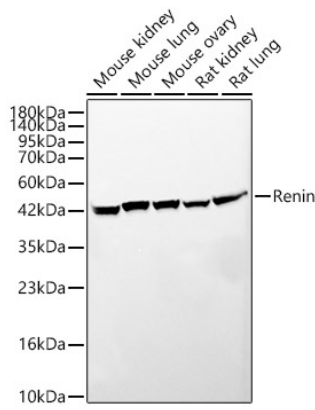
Affinity purification

**Storage**

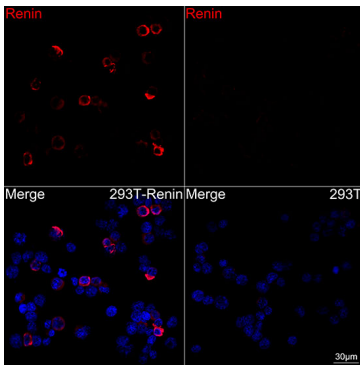
Store at -20°C. Avoid freeze / thaw cycles.

Buffer: PBS with 0.05% proclin300,0.05% BSA,50% glycerol,pH7.3.

## Validation Data



Western blot analysis of various lysates, using Renin Rabbit mAb (A24393) at 1:1000 dilution.  
Secondary antibody: HRP-conjugated Goat anti-Rabbit IgG (H+L) (AS014) at 1:10000 dilution.  
Lysates/proteins: 25 $\mu$ g per lane.  
Blocking buffer: 3% nonfat dry milk in TBST.  
Detection: ECL Basic Kit (RM00020).  
Exposure time: 45s.



Confocal imaging of 293T-Renin and 293T cells using Renin Rabbit mAb (A24393, dilution 1:200) (Red). DAPI was used for nuclear staining (blue). Objective: 100x.