

ABflo® 488 Rabbit anti-Mouse CD146 mAb

Catalog No.: A24397

Basic Information

Observed MW

Refer to figures

Calculated MW

71kDa

Category

Primary antibody

Applications

FC

Cross-Reactivity

Mouse

CloneNo number

ARC62356-ABflo488

Conjugate

ABflo® 488. Ex:491nm. Em:516nm.

Recommended Dilutions

FC 5 µl per 10⁶ cells in
100 µl volume

Background

Predicted to be involved in angiogenesis and positive regulation of cell migration. Predicted to act upstream of or within heterophilic cell-cell adhesion via plasma membrane cell adhesion molecules. Predicted to be located in external side of plasma membrane; extracellular space; and nucleus. Predicted to be active in plasma membrane. Is expressed in several structures, including adipose tissue; genitourinary system; gut; nervous system; and respiratory system. Orthologous to human MCAM (melanoma cell adhesion molecule).

Immunogen Information

Gene ID

84004

Swiss Prot

Q8R2Y2

Immunogen

Recombinant Protein corresponding to a sequence within amino acids 24-563 of mouse CD146 (NP_075548.2)

Synonyms

CD146; CD149; Muc18; s-endo; 1-gicerin; s-gicerin

Contact

☎ | 400-999-6126

✉ | cn.market@abclonal.com.cn

🌐 | www.abclonal.com.cn

Product Information

Source

Rabbit

Isotype

IgG

Purification

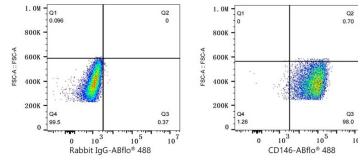
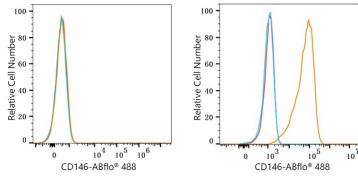
Affinity purification

Storage

Store at 2-8°C. Avoid freeze.

Buffer: PBS with 0.03% proclin300,0.2% BSA,pH7.3.

Validation Data



Flow cytometry: 1×10^6 CTLL-2 cells (negative control, Left) and bEnd.3 cells (Right) were surface-stained with ABflo® 488 Rabbit anti-Mouse CD146 mAb (A24397, 5 μ l/Test, orange line) or ABflo® 488 Rabbit IgG isotype control (A22069, 5 μ l/Test, blue line). Non-fluorescently stained cells were used as blank control (red line).

Flow cytometry: 1×10^6 bEnd.3 cells were surface-stained with ABflo® 488 Rabbit IgG isotype control (A22069, 5 μ l/Test, left) or ABflo® 488 Rabbit anti-Mouse CD146 mAb (A24397, 5 μ l/Test, right).